

Statistics

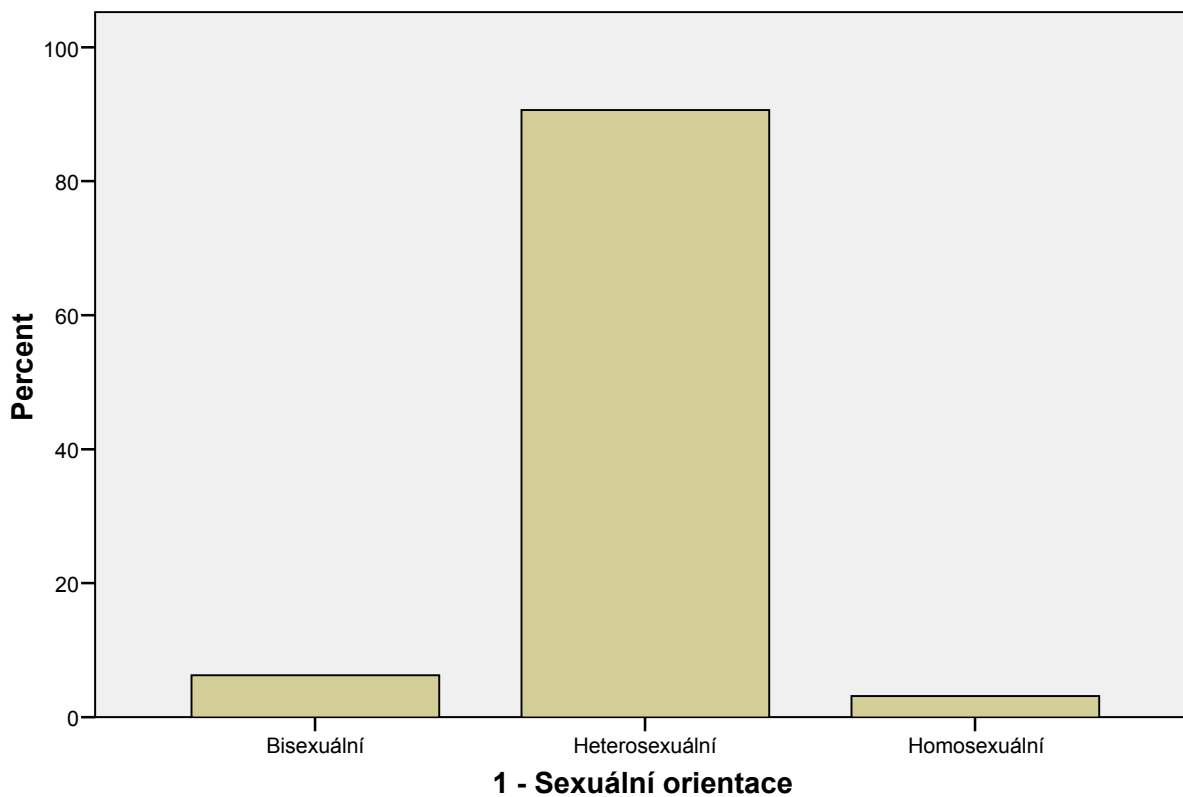
1 - Sexuální orientace

N	Valid	224
	Missing	0

1 - Sexuální orientace

	Frequency	Percent	Valid Percent	Cumulative Percent
Valid Bisexuální	14	6,3	6,3	6,3
Heterosexuální	203	90,6	90,6	96,9
Homosexuální	7	3,1	3,1	100,0
Total	224	100,0	100,0	

1 - Sexuální orientace



```
FREQUENCIES  
VARIABLES=@2Současnýpartner  
/BARCHART PERCENT  
/ORDER= ANALYSIS .
```

Frequencies

Notes

Output Created	19-NOV-2010 22:29:22	
Comments		
Input	Active Dataset	DataSet2
	Filter	<none>
	Weight	<none>
	Split File	<none>
	N of Rows in Working Data File	224
Missing Value Handling	Definition of Missing	User-defined missing values are treated as missing.
	Cases Used	Statistics are based on all cases with valid data.
Syntax	FREQUENCIES VARIABLES=@2Souèasnýpartner /BARCHART PERCENT /ORDER= ANALYSIS .	
Resources	Elapsed Time	0:00:00,16
	Processor Time	0:00:00,17

[DataSet2]

Statistics

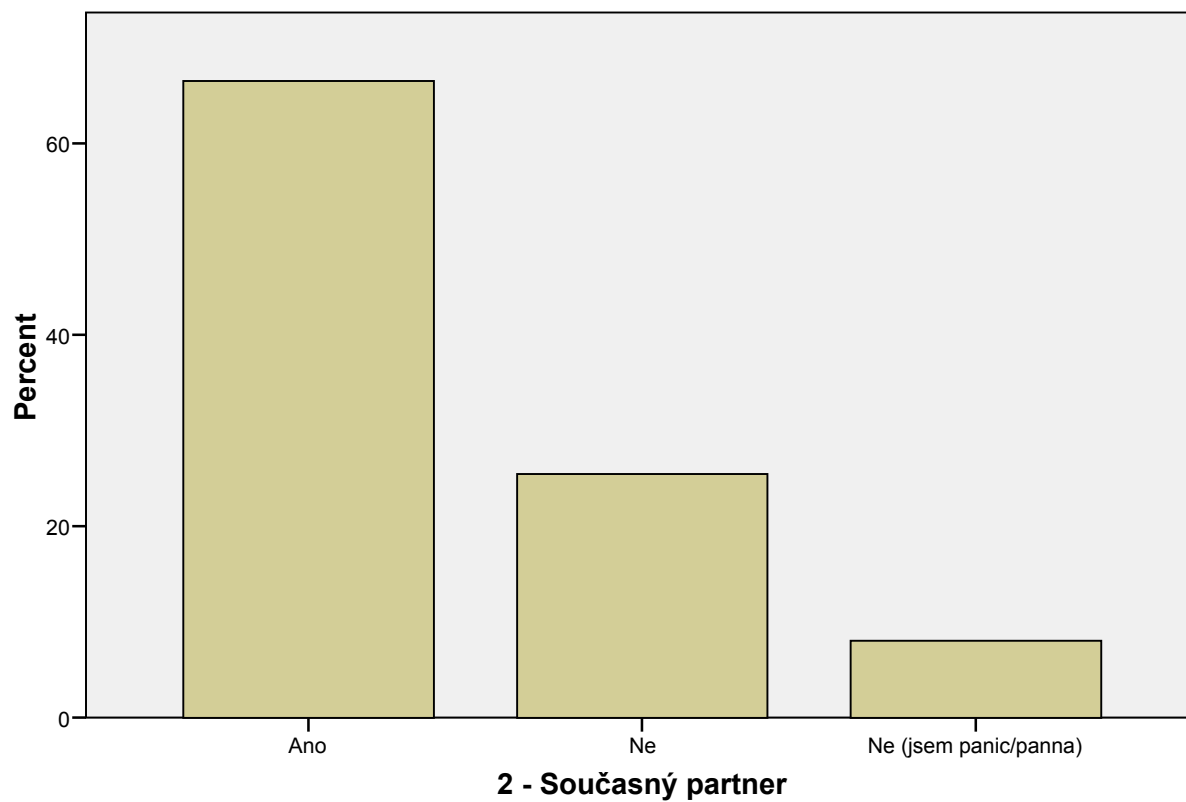
2 - Souèasný partner

N	Valid	224
	Missing	0

2 - Souèasný partner

		Frequency	Percent	Valid Percent	Cumulative Percent
Valid	Ano	149	66,5	66,5	66,5
	Ne	57	25,4	25,4	92,0
	Ne (jsem panic/panna)	18	8,0	8,0	100,0
	Total	224	100,0	100,0	

2 - Současný partner



```
FREQUENCIES  
VARIABLES=@3Prvnísex  
/BARCHART PERCENT  
/ORDER= ANALYSIS .
```

```
FREQUENCIES  
VARIABLES=@3Prvnísex  
/BARCHART PERCENT  
/ORDER= ANALYSIS .
```

Frequencies

Notes

Output Created	19-NOV-2010 22:33:17	
Comments		
Input	Active Dataset	DataSet2
	Filter	<none>
	Weight	<none>
	Split File	<none>
	N of Rows in Working Data File	224
Missing Value Handling	Definition of Missing	User-defined missing values are treated as missing.
	Cases Used	Statistics are based on all cases with valid data.
Syntax	FREQUENCIES VARIABLES=@3Prvnísex /BARCHART PERCENT /ORDER= ANALYSIS .	
Resources	Elapsed Time	0:00:00,16
	Processor Time	0:00:00,20

[DataSet2]

Statistics

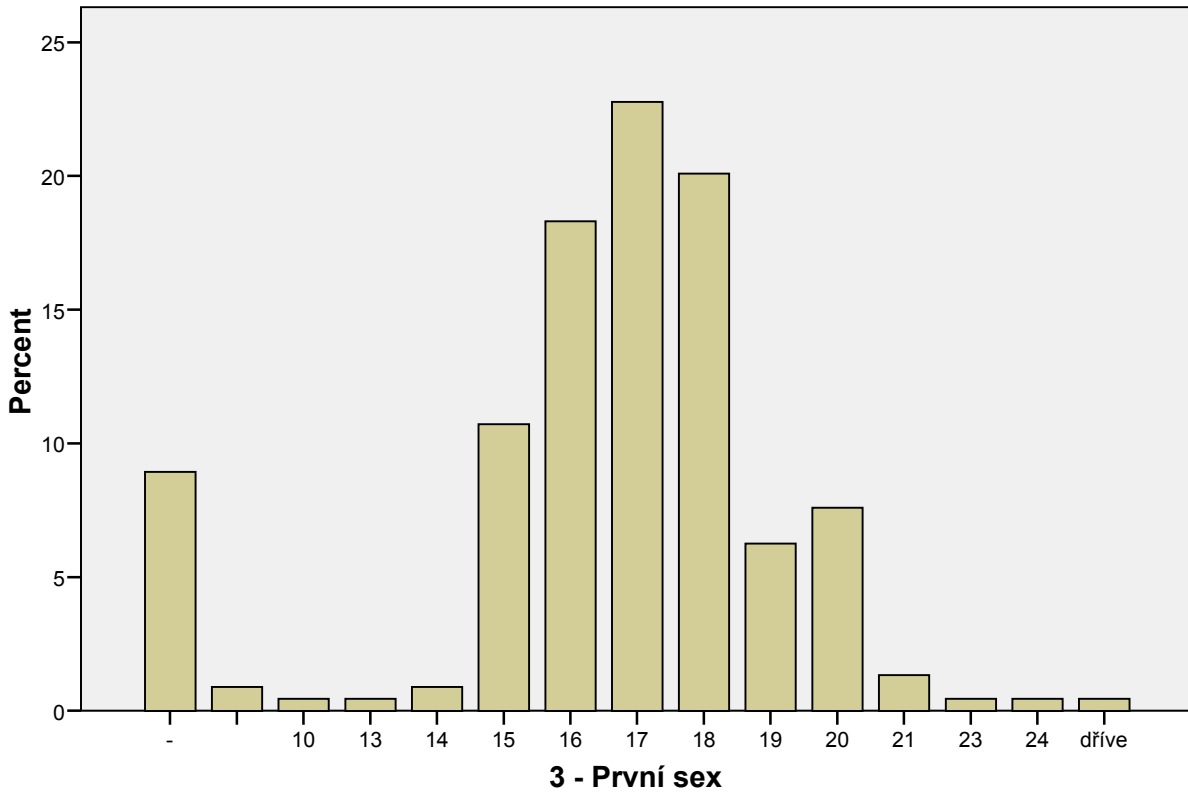
3 - První sex

N	Valid	224
	Missing	0

3 - První sex

	Frequency	Percent	Valid Percent	Cumulative Percent
Valid -	20	8,9	8,9	8,9
	2	,9	,9	9,8
10	1	,4	,4	10,3
13	1	,4	,4	10,7
14	2	,9	,9	11,6
15	24	10,7	10,7	22,3
16	41	18,3	18,3	40,6
17	51	22,8	22,8	63,4
18	45	20,1	20,1	83,5
19	14	6,3	6,3	89,7
20	17	7,6	7,6	97,3
21	3	1,3	1,3	98,7
23	1	,4	,4	99,1
24	1	,4	,4	99,6
døíve	1	,4	,4	100,0
Total	224	100,0	100,0	

3 - První sex



FREQUENCIES

```
VARIABLES=@4Kolikrát měsíčně
/BARCHART PERCENT
/ORDER= ANALYSIS .
```

Frequencies

Notes

Output Created	19-NOV-2010 22:35:18	
Comments		
Input	Active Dataset	DataSet2
	Filter	<none>
	Weight	<none>
	Split File	<none>
	N of Rows in Working Data File	224
Missing Value Handling	Definition of Missing	User-defined missing values are treated as missing.
	Cases Used	Statistics are based on all cases with valid data.
Syntax	FREQUENCIES VARIABLES=@4Kolikrát měsíčně /BARCHART PERCENT /ORDER= ANALYSIS .	
Resources	Elapsed Time	0:00:00,14
	Processor Time	0:00:00,16

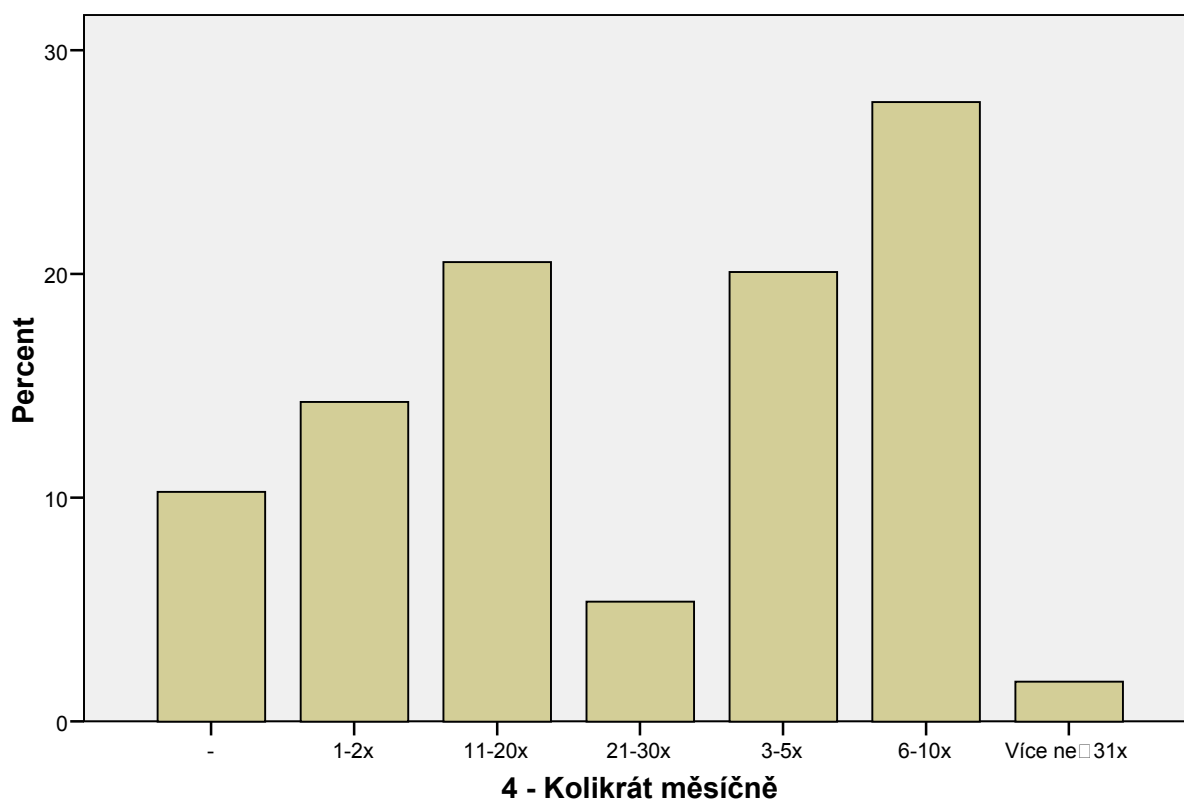
Statistics

4 - Kolikrát měsíčně

N	Valid	224
	Missing	0

4 - Kolikrát měsíčně

	Frequency	Percent	Valid Percent	Cumulative Percent
Valid -	23	10,3	10,3	10,3
1-2x	32	14,3	14,3	24,6
11-20x	46	20,5	20,5	45,1
21-30x	12	5,4	5,4	50,4
3-5x	45	20,1	20,1	70,5
6-10x	62	27,7	27,7	98,2
Více než 31x	4	1,8	1,8	100,0
Total	224	100,0	100,0	

4 - Kolikrát měsíčně

```

FREQUENCIES
  VARIABLES=@5Početsexpartnerů
  /STATISTICS=MEAN MEDIAN
  /BARCHART PERCENT
  /ORDER= ANALYSIS .

```

Frequencies

Notes

Output Created	19-NOV-2010 22:41:13	
Comments		
Input	Active Dataset	DataSet2
	Filter	<none>
	Weight	<none>
	Split File	<none>
	N of Rows in Working Data File	224
Missing Value Handling	Definition of Missing	User-defined missing values are treated as missing.
	Cases Used	Statistics are based on all cases with valid data.
Syntax	FREQUENCIES VARIABLES=@5Poèetsexpartnerù /STATISTICS=MEAN MEDIAN /BARCHART PERCENT /ORDER= ANALYSIS .	
Resources	Elapsed Time	0:00:00,14
	Processor Time	0:00:00,16

[DataSet2]

Statistics

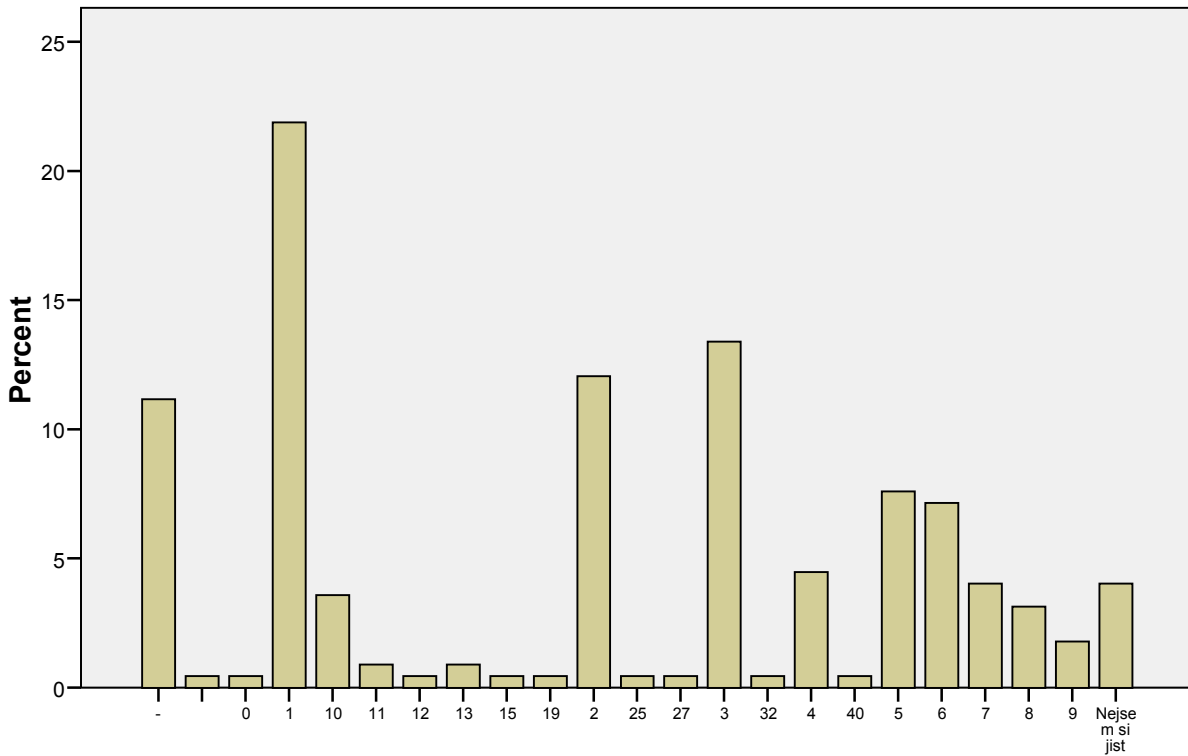
5 - Poèet sex partnerù

N	Valid	224
	Missing	0

5 - Poèet sex partnerù

	Frequency	Percent	Valid Percent	Cumulative Percent
Valid -	25	11,2	11,2	11,2
	1	,4	,4	11,6
0	1	,4	,4	12,1
1	49	21,9	21,9	33,9
10	8	3,6	3,6	37,5
11	2	,9	,9	38,4
12	1	,4	,4	38,8
13	2	,9	,9	39,7
15	1	,4	,4	40,2
19	1	,4	,4	40,6
2	27	12,1	12,1	52,7
25	1	,4	,4	53,1
27	1	,4	,4	53,6
3	30	13,4	13,4	67,0
32	1	,4	,4	67,4
4	10	4,5	4,5	71,9
40	1	,4	,4	72,3
5	17	7,6	7,6	79,9
6	16	7,1	7,1	87,1
7	9	4,0	4,0	91,1
8	7	3,1	3,1	94,2
9	4	1,8	1,8	96,0
Nejsem si jist	9	4,0	4,0	100,0
Total	224	100,0	100,0	

5 - Počet sex partnerů



5 - Počet sex partnerů

```
FREQUENCIES
VARIABLES=@6Početpovařuje
/STATISTICS=MEAN MEDIAN
/BARCHART PERCENT
/ORDER= ANALYSIS .
```

Frequencies

Notes

Output Created	19-NOV-2010 22:49:06	
Comments		
Input	Active Dataset	DataSet2
	Filter	<none>
	Weight	<none>
	Split File	<none>
	N of Rows in Working Data File	224
Missing Value Handling	Definition of Missing	User-defined missing values are treated as missing.
	Cases Used	Statistics are based on all cases with valid data.
Syntax	FREQUENCIES VARIABLES=@6Početpovařuje /STATISTICS=MEAN MEDIAN /BARCHART PERCENT /ORDER= ANALYSIS .	
Resources	Elapsed Time	0:00:00,14
	Processor Time	0:00:00,14

[DataSet2]

Statistics

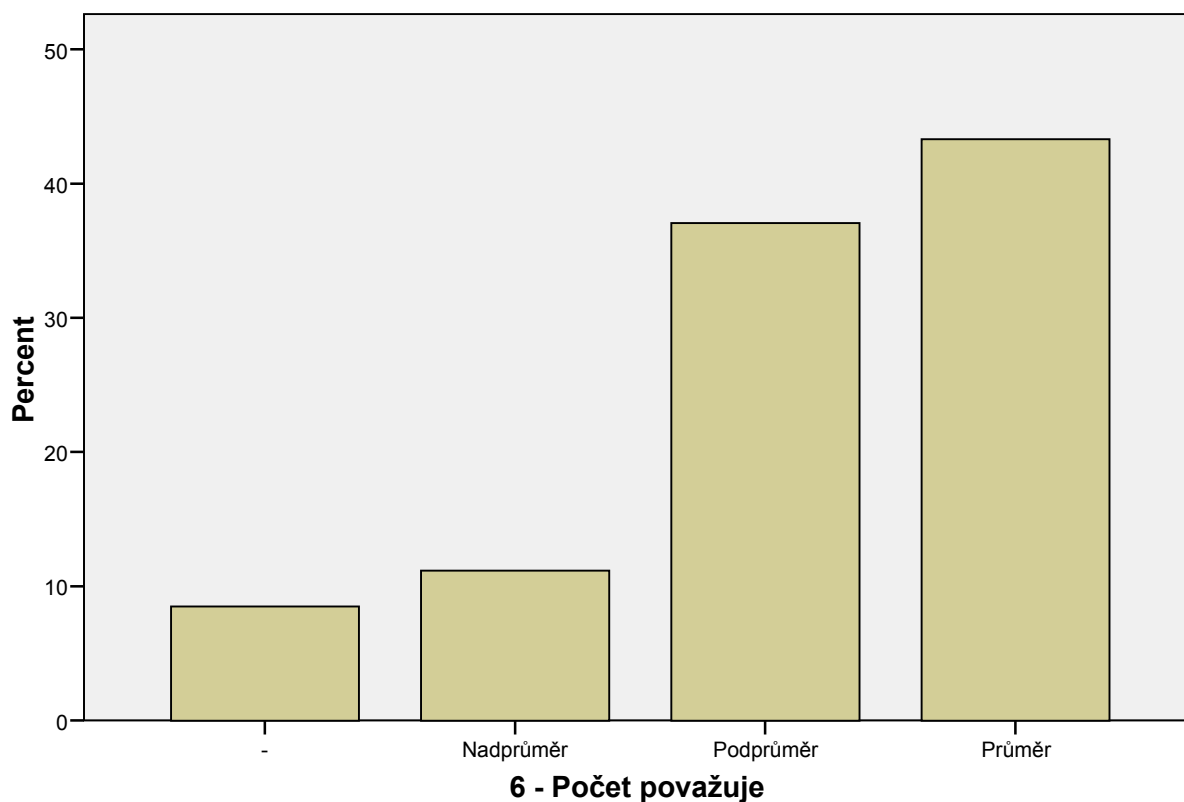
6 - Počet považuje

N	Valid	224
	Missing	0

6 - Počet považuje

	Frequency	Percent	Valid Percent	Cumulative Percent
Valid -	19	8,5	8,5	8,5
Nadprůměr	25	11,2	11,2	19,6
Podprůměr	83	37,1	37,1	56,7
Průměr	97	43,3	43,3	100,0
Total	224	100,0	100,0	

6 - Počet považuje



```
FREQUENCIES  
VARIABLES=@7sexamenstruace  
/STATISTICS=MEAN MEDIAN  
/BARCHART PERCENT  
/ORDER= ANALYSIS .
```

Frequencies

Notes

Output Created	19-NOV-2010 22:49:27	
Comments		
Input	Active Dataset	DataSet2
	Filter	<none>
	Weight	<none>
	Split File	<none>
	N of Rows in Working Data File	224
Missing Value Handling	Definition of Missing	User-defined missing values are treated as missing.
	Cases Used	Statistics are based on all cases with valid data.
Syntax	FREQUENCIES VARIABLES=@7sexamenstruace /STATISTICS=MEAN MEDIAN /BARCHART PERCENT /ORDER= ANALYSIS .	
Resources	Elapsed Time	0:00:00,16
	Processor Time	0:00:00,20

[DataSet2]

Statistics

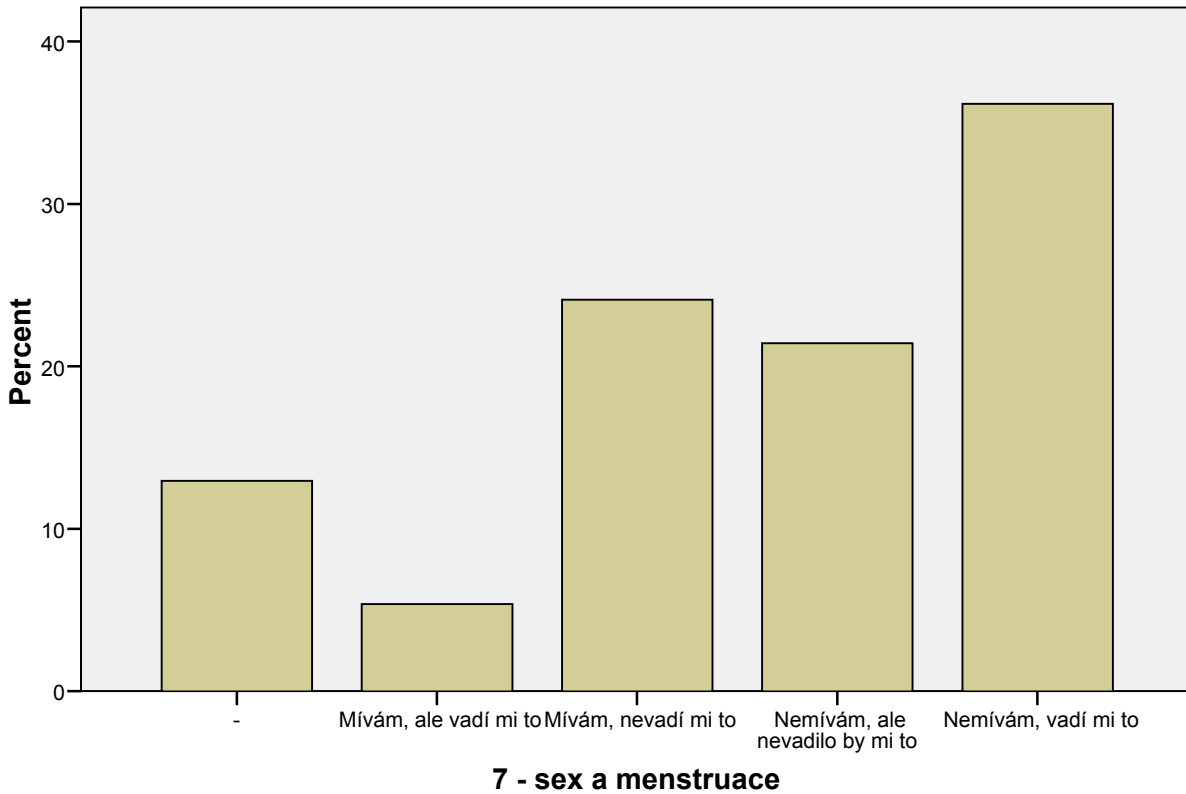
7 - sex a menstruace

N	Valid	224
	Missing	0

7 - sex a menstruace

	Frequency	Percent	Valid Percent	Cumulative Percent
Valid -	29	12,9	12,9	12,9
Mívám, ale vadí mi to	12	5,4	5,4	18,3
Mívám, nevadí mi to	54	24,1	24,1	42,4
Nemívám, ale nevadilo by mi to	48	21,4	21,4	63,8
Nemívám, vadí mi to	81	36,2	36,2	100,0
Total	224	100,0	100,0	

7 - sex a menstruace



FREQUENCIES

```
VARIABLES=@8Afrodisiaka @8Bičik @8Dildo @8Kostýmky @8Lubrikačnigel  
@8Pouta @8Vibračníkrouček @8Vibrátor  
/STATISTICS=MEAN MEDIAN  
/BARCHART PERCENT  
/ORDER= ANALYSIS .
```

FREQUENCIES

```
VARIABLES=@8Afrodisiaka @8Bičik @8Dildo @8Kostýmky @8Lubrikačnigel  
@8Pouta @8Vibračníkrouček @8Vibrátor  
/STATISTICS=MEAN MEDIAN  
/BARCHART PERCENT  
/ORDER= ANALYSIS .
```

Frequencies

Notes

Output Created	19-NOV-2010 22:53:25	
Comments		
Input	Active Dataset	DataSet2
	Filter	<none>
	Weight	<none>
	Split File	<none>
	N of Rows in Working Data File	224
Missing Value Handling	Definition of Missing	User-defined missing values are treated as missing.
	Cases Used	Statistics are based on all cases with valid data.
Syntax	FREQUENCIES VARIABLES=@8Afrodisiaka @8Bièk @8Dildo @8Kostýmky @8Lubrikaènígel @8Pouta @8Vibraèníkrouček @8Vibrátor /STATISTICS=MEAN MEDIAN /BARChart PERCENT /ORDER= ANALYSIS .	
Resources	Elapsed Time	0:00:01,09
	Processor Time	0:00:01,16

[DataSet2]

Statistics

		8 - Afrodisiaka	8 - Bièk	8 - Dildo	8 - Kostýmky	8 - Lubrikaènígel	8 - Pouta
N	Valid	199	198	198	200	201	196
	Missing	25	26	26	24	23	28

Statistics

		8 - Vibraèníkrouček	8 - Vibrátor
N	Valid	200	200
	Missing	24	24

Frequency Table

8 - Afrodisiaka

		Frequency	Percent	Valid Percent	Cumulative Percent
Valid	Easto	4	1,8	2,0	2,0
	Nikdy	157	70,1	78,9	80,9
	Obèas	37	16,5	18,6	99,5
	Vdy	1	,4	,5	100,0
	Total	199	88,8	100,0	
Missing	-	25	11,2		
Total		224	100,0		

8 - Bièik

		Frequency	Percent	Valid Percent	Cumulative Percent
Valid	Nikdy	186	83,0	93,9	93,9
	Obèas	9	4,0	4,5	98,5
	Vitšinou	1	,4	,5	99,0
	V□dy	2	,9	1,0	100,0
	Total	198	88,4	100,0	
Missing	-	26	11,6		
Total		224	100,0		

8 - Dildo

		Frequency	Percent	Valid Percent	Cumulative Percent
Valid	Èasto	2	,9	1,0	1,0
	Nikdy	182	81,3	91,9	92,9
	Obèas	10	4,5	5,1	98,0
	Vitšinou	2	,9	1,0	99,0
	V□dy	2	,9	1,0	100,0
	Total	198	88,4	100,0	
Missing	-	26	11,6		
Total		224	100,0		

8 - Kostýmky

		Frequency	Percent	Valid Percent	Cumulative Percent
Valid	Èasto	7	3,1	3,5	3,5
	Nikdy	142	63,4	71,0	74,5
	Obèas	49	21,9	24,5	99,0
	V□dy	2	,9	1,0	100,0
	Total	200	89,3	100,0	
Missing	-	24	10,7		
Total		224	100,0		

8 - Lubrikaèní gel

		Frequency	Percent	Valid Percent	Cumulative Percent
Valid	Èasto	33	14,7	16,4	16,4
	Nikdy	75	33,5	37,3	53,7
	Obèas	65	29,0	32,3	86,1
	Vitšinou	19	8,5	9,5	95,5
	V□dy	9	4,0	4,5	100,0
	Total	201	89,7	100,0	
Missing	-	23	10,3		
Total		224	100,0		

8 - Pouta

		Frequency	Percent	Valid Percent	Cumulative Percent
Valid	Ěasto	11	4,9	5,6	5,6
	Nikdy	122	54,5	62,2	67,9
	Oběs	59	26,3	30,1	98,0
	Vitšinou	1	,4	,5	98,5
	Vřdy	3	1,3	1,5	100,0
	Total	196	87,5	100,0	
Missing	-	28	12,5		
Total		224	100,0		

8 - Vibraění kroužek

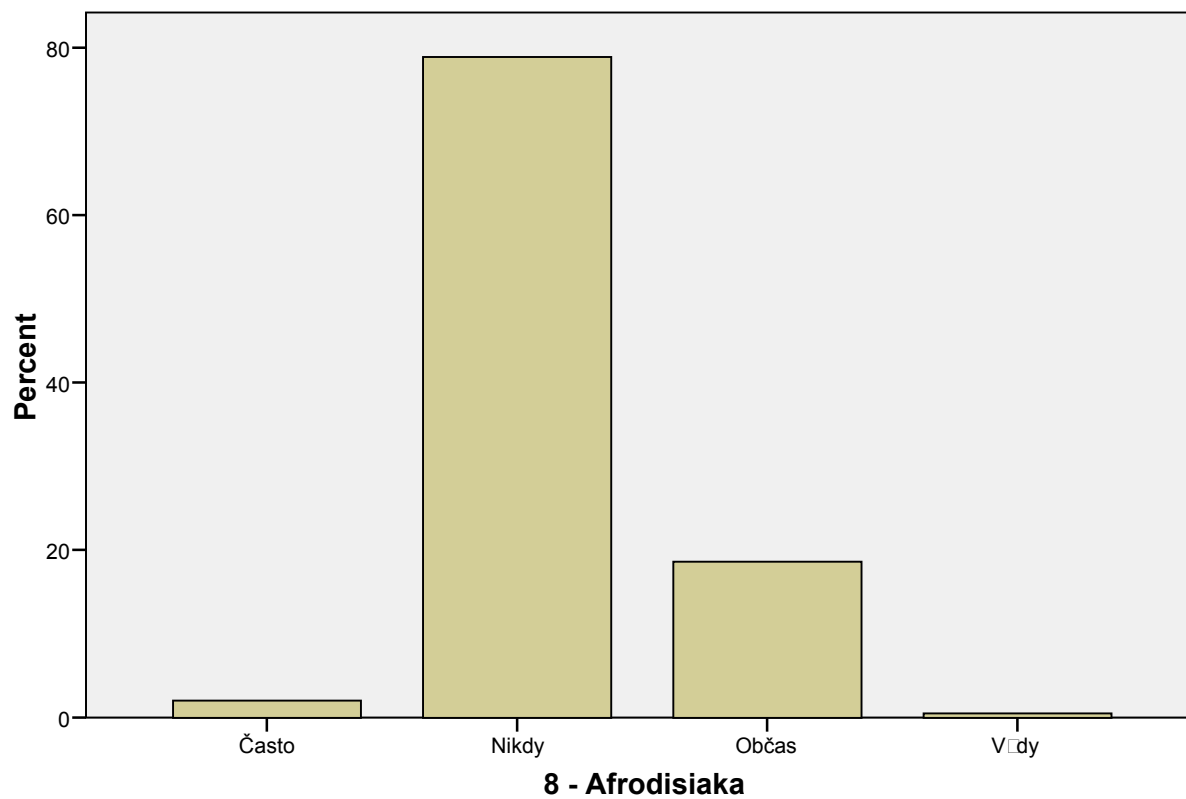
		Frequency	Percent	Valid Percent	Cumulative Percent
Valid	Ěasto	5	2,2	2,5	2,5
	Nikdy	149	66,5	74,5	77,0
	Oběs	45	20,1	22,5	99,5
	Vřdy	1	,4	,5	100,0
	Total	200	89,3	100,0	
Missing	-	24	10,7		
Total		224	100,0		

8 - Vibrátor

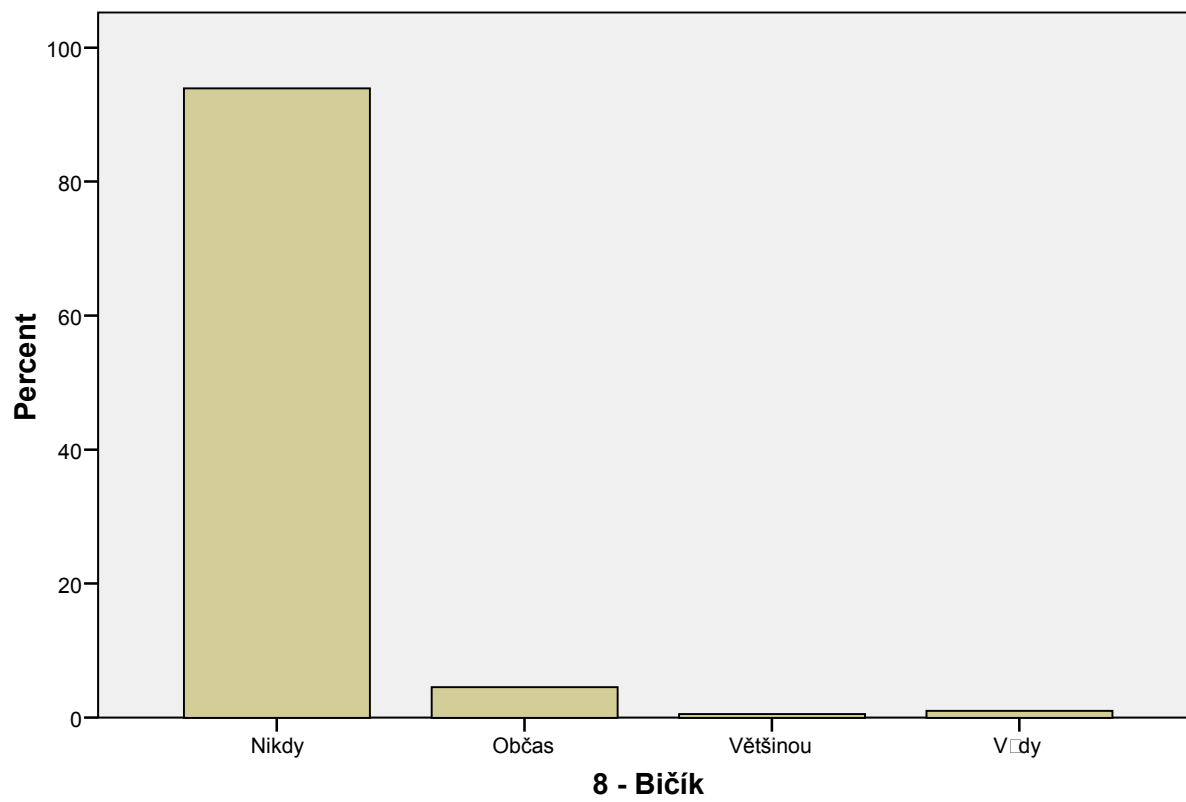
		Frequency	Percent	Valid Percent	Cumulative Percent
Valid	Ěasto	11	4,9	5,5	5,5
	Nikdy	154	68,8	77,0	82,5
	Oběs	33	14,7	16,5	99,0
	Vřdy	2	,9	1,0	100,0
	Total	200	89,3	100,0	
Missing	-	24	10,7		
Total		224	100,0		

Bar Chart

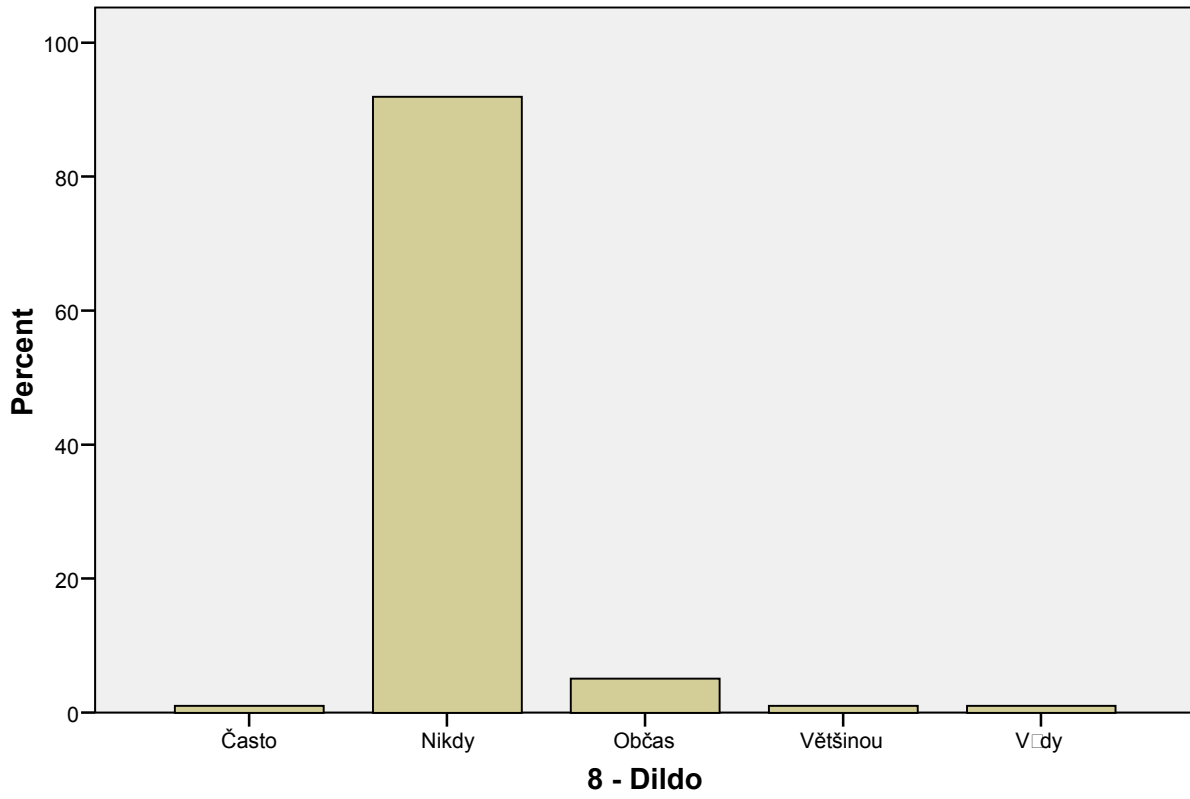
8 - Afrodisiaka



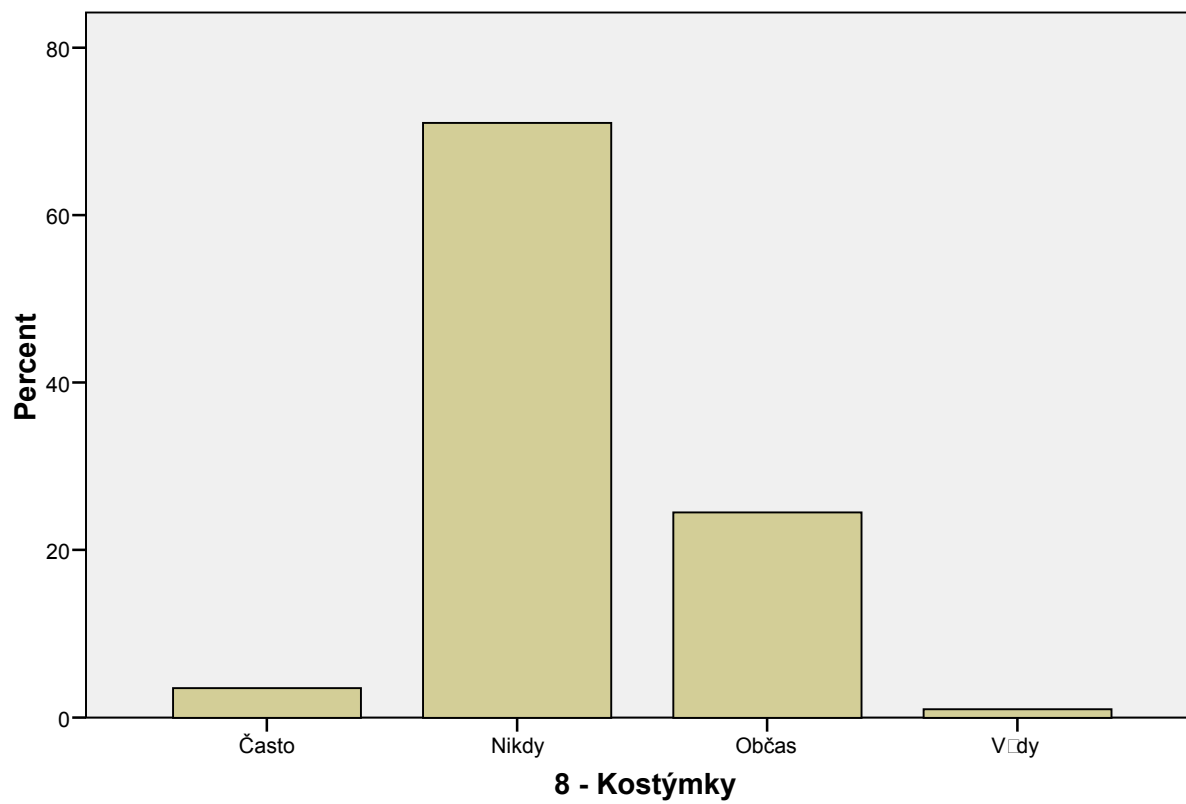
8 - Bičik



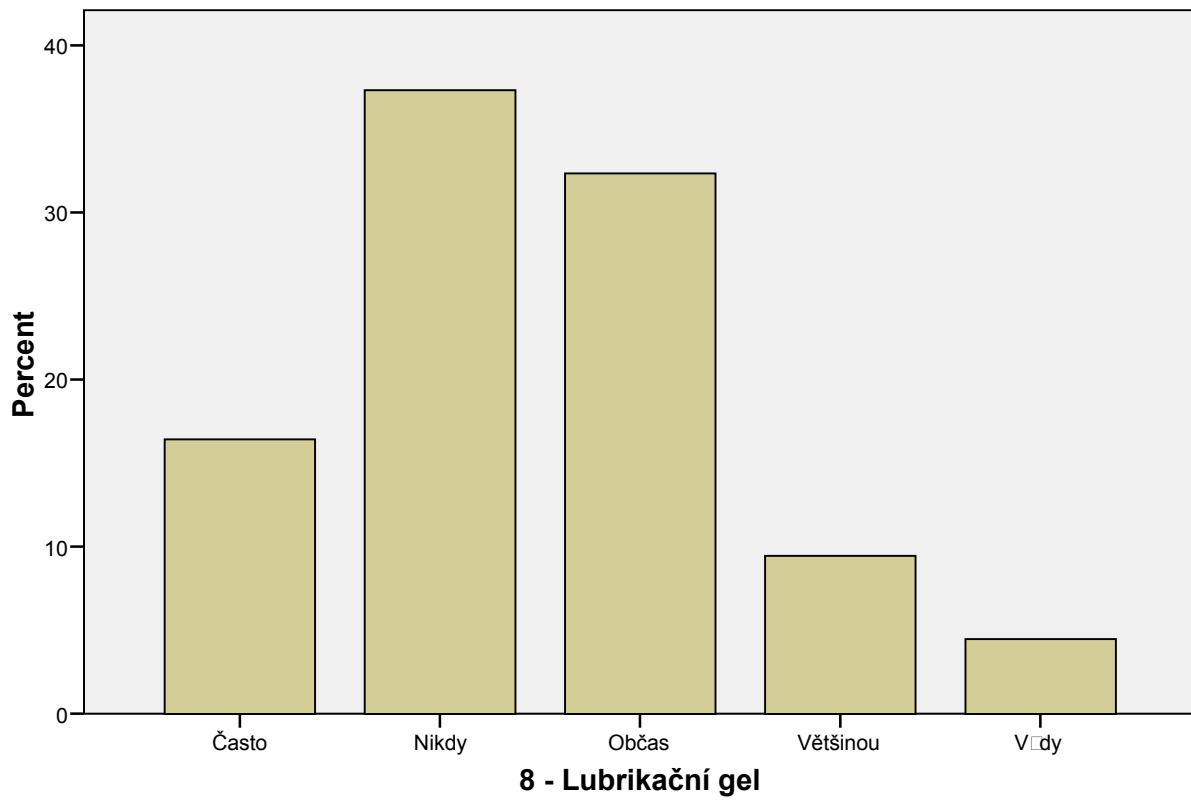
8 - Dildo



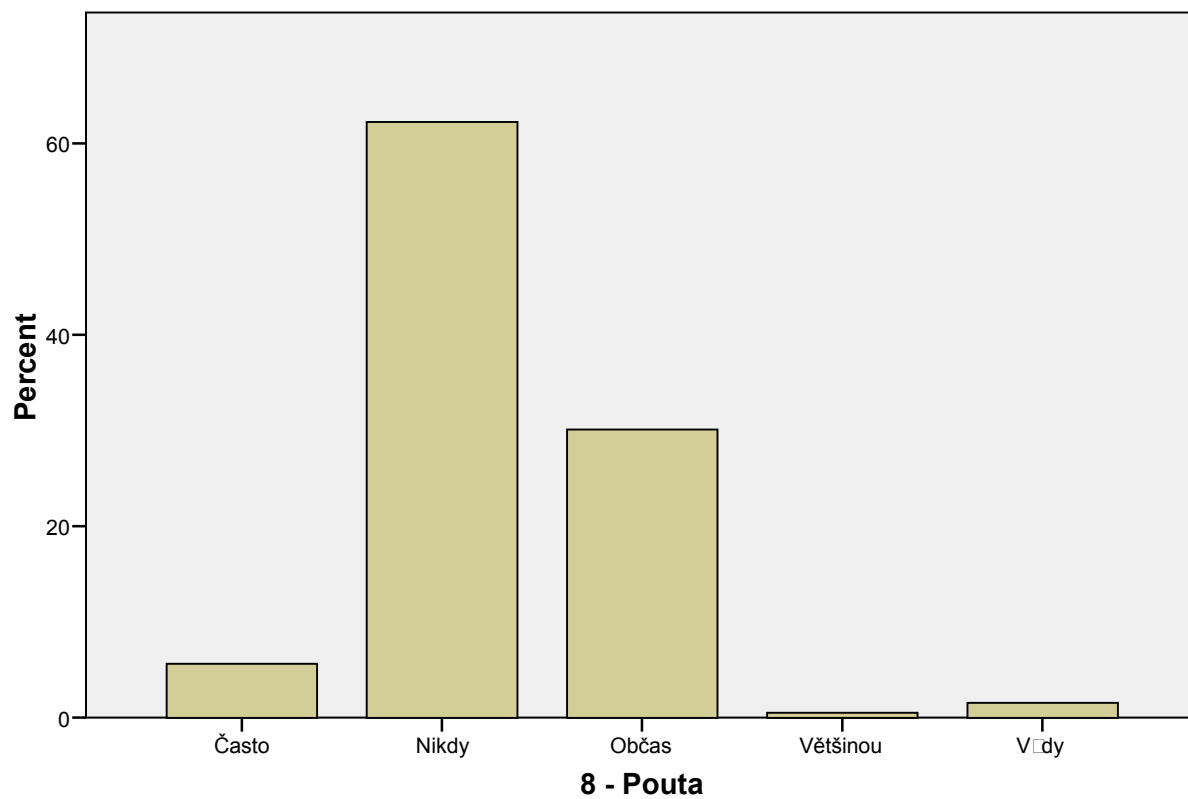
8 - Kostýmky



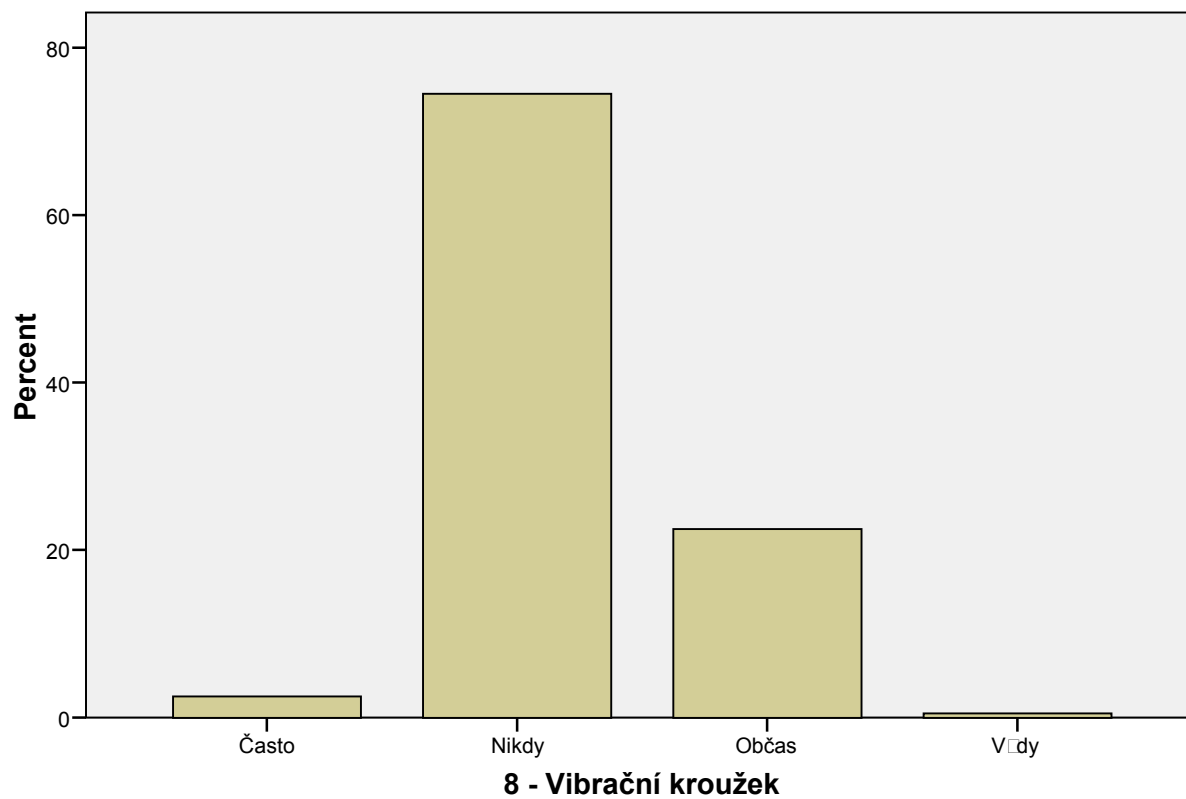
8 - Lubrikační gel



8 - Pouta



8 - Vibrační kroužek



Notes

Output Created	19-NOV-2010 22:55:20	
Comments		
Input	Active Dataset	DataSet2
	Filter	<none>
	Weight	<none>
	Split File	<none>
	N of Rows in Working Data File	224
Missing Value Handling	Definition of Missing	User-defined missing values are treated as missing.
	Cases Used	Statistics are based on all cases with valid data.
Syntax	FREQUENCIES VARIABLES=@10Sexnajednunc /STATISTICS=MEAN MEDIAN /BARCHART PERCENT /ORDER= ANALYSIS .	
Resources	Elapsed Time	0:00:00,16
	Processor Time	0:00:00,20

[DataSet2]

Statistics

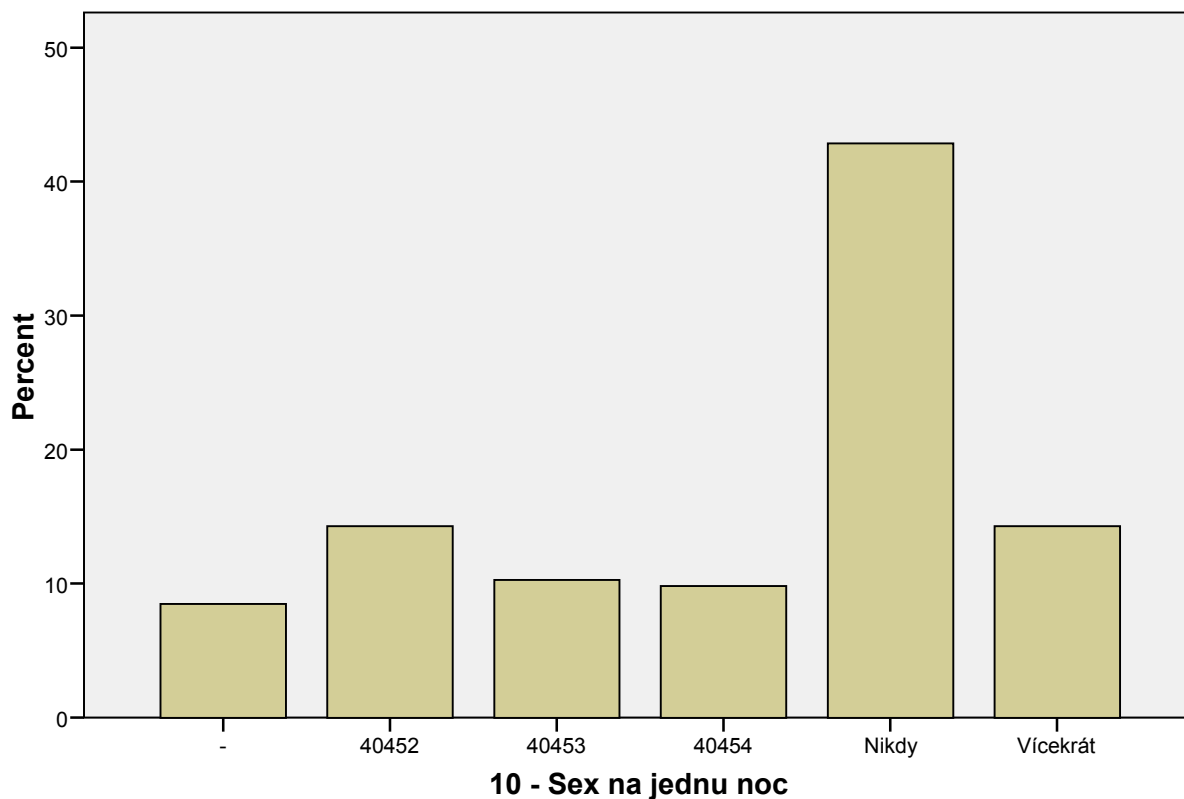
10 - Sex na jednu noc

N	Valid	224
	Missing	0

10 - Sex na jednu noc

	Frequency	Percent	Valid Percent	Cumulative Percent
Valid -	19	8,5	8,5	8,5
40452	32	14,3	14,3	22,8
40453	23	10,3	10,3	33,0
40454	22	9,8	9,8	42,9
Nikdy	96	42,9	42,9	85,7
Vícekrát	32	14,3	14,3	100,0
Total	224	100,0	100,0	

10 - Sex na jednu noc



FREQUENCIES

```
VARIABLES=@11Bezantikoncepce @11Kondom @11Hormonálniantikoncepce  
@11Přerušovanásoulo @11Jinýdruhantikoncepce  
/STATISTICS=MEAN MEDIAN  
/BARCHART PERCENT  
/ORDER= ANALYSIS .
```

FREQUENCIES

```
VARIABLES=@11Bezantikoncepce @11Kondom @11Hormonálniantikoncepce  
@11Přerušovanásoulo @11Jinýdruhantikoncepce  
/STATISTICS=MEAN MEDIAN  
/BARCHART PERCENT  
/ORDER= ANALYSIS .
```

Frequencies

Notes

Output Created	19-NOV-2010 23:02:02	
Comments		
Input	Active Dataset	DataSet2
	Filter	<none>
	Weight	<none>
	Split File	<none>
	N of Rows in Working Data File	224
Missing Value Handling	Definition of Missing	User-defined missing values are treated as missing.
	Cases Used	Statistics are based on all cases with valid data.
Syntax	<pre> FREQUENCIES VARIABLES=@11Bezantikoncepce @11Kondom @11Hormonálníantikoncepce @11Pøerušovanásoulo□ @11Jinýdruhantikoncepce /STATISTICS=MEAN MEDIAN /BARChart PERCENT /ORDER= ANALYSIS . </pre>	
Resources	Elapsed Time	0:00:00,69
	Processor Time	0:00:00,72

[DataSet2]

Statistics

	11 - Bez antikoncepce	11 - Kondom	11 - Hormonální antikoncepce	11 - Pøerušovaná soulo□	11 - Jiný druh antikoncepce
N Valid	159	185	187	163	155
Missing	65	39	37	61	69

Frequency Table

11 - Bez antikoncepce

	Frequency	Percent	Valid Percent	Cumulative Percent
Valid				
Ěasto	3	1,3	1,9	1,9
Nikdy	128	57,1	80,5	82,4
Občas	18	8,0	11,3	93,7
Většinou	3	1,3	1,9	95,6
Vždy	7	3,1	4,4	100,0
Total	159	71,0	100,0	
Missing	-	29,0		
Total	224	100,0		

11 - Kondom

		Frequency	Percent	Valid Percent	Cumulative Percent
Valid	Ěasto	15	6,7	8,1	8,1
	Nikdy	32	14,3	17,3	25,4
	Oběs	87	38,8	47,0	72,4
	Vitšinou	21	9,4	11,4	83,8
	Vřdy	30	13,4	16,2	100,0
	Total	185	82,6	100,0	
Missing	-	39	17,4		
Total		224	100,0		

11 - Hormonální antikoncepce

		Frequency	Percent	Valid Percent	Cumulative Percent
Valid	Ěasto	6	2,7	3,2	3,2
	Nikdy	37	16,5	19,8	23,0
	Oběs	9	4,0	4,8	27,8
	Vitšinou	25	11,2	13,4	41,2
	Vřdy	110	49,1	58,8	100,0
	Total	187	83,5	100,0	
Missing	-	37	16,5		
Total		224	100,0		

11 - Pøerušovaná soulož

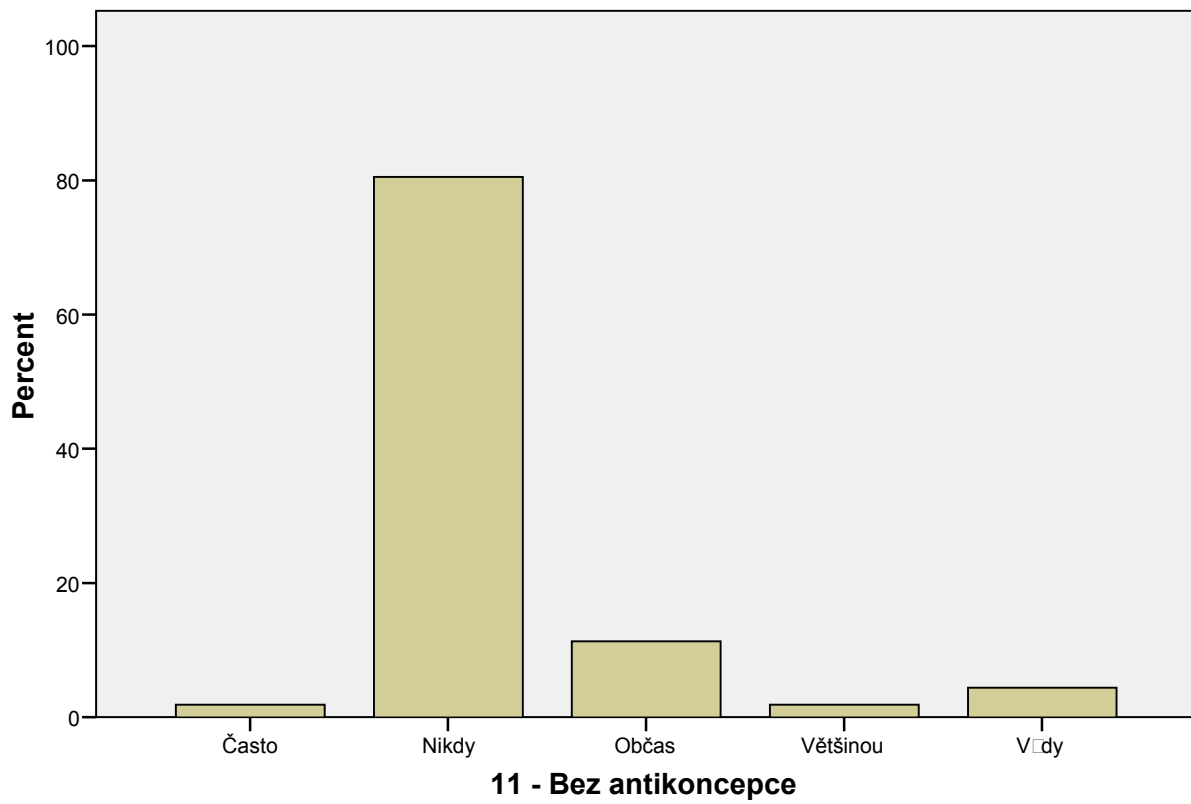
		Frequency	Percent	Valid Percent	Cumulative Percent
Valid	Ěasto	7	3,1	4,3	4,3
	Nikdy	102	45,5	62,6	66,9
	Oběs	36	16,1	22,1	89,0
	Vitšinou	12	5,4	7,4	96,3
	Vřdy	6	2,7	3,7	100,0
	Total	163	72,8	100,0	
Missing	-	61	27,2		
Total		224	100,0		

11 - Jiný druh antikoncepce

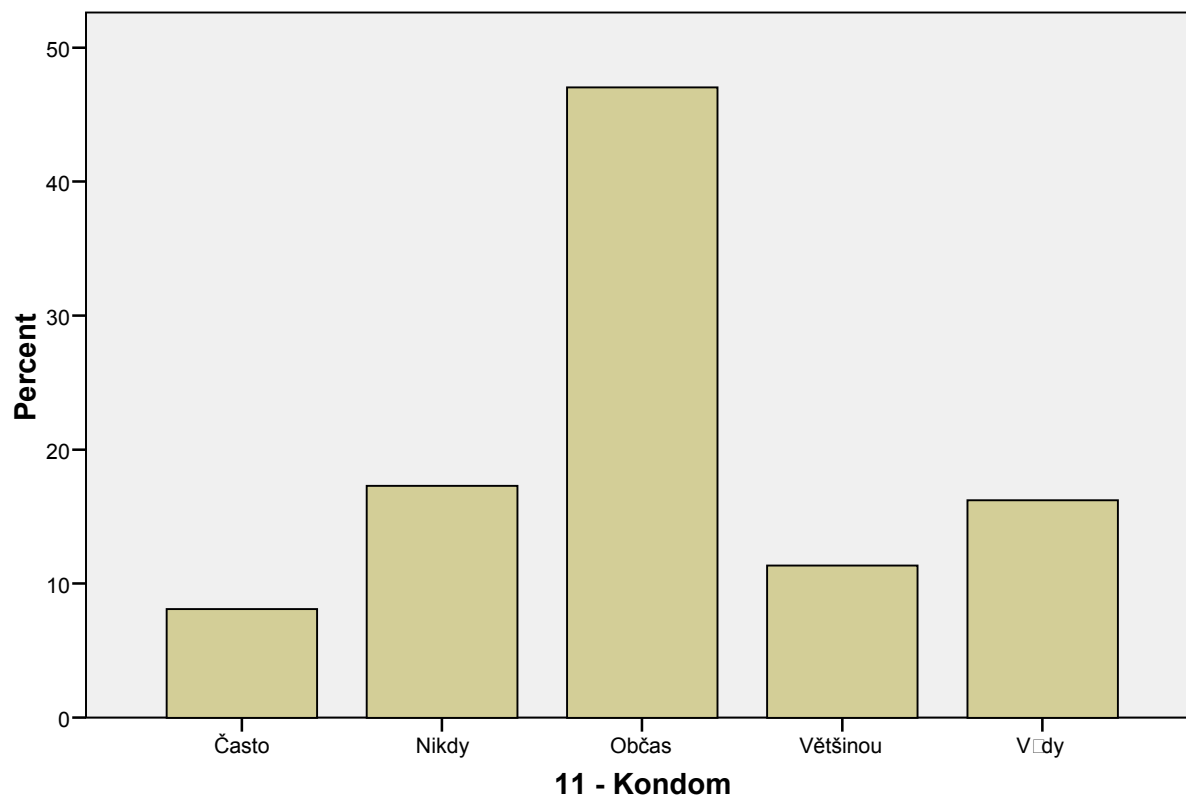
		Frequency	Percent	Valid Percent	Cumulative Percent
Valid	Nikdy	146	65,2	94,2	94,2
	Oběs	5	2,2	3,2	97,4
	Vřdy	4	1,8	2,6	100,0
	Total	155	69,2	100,0	
Missing	-	69	30,8		
Total		224	100,0		

Bar Chart

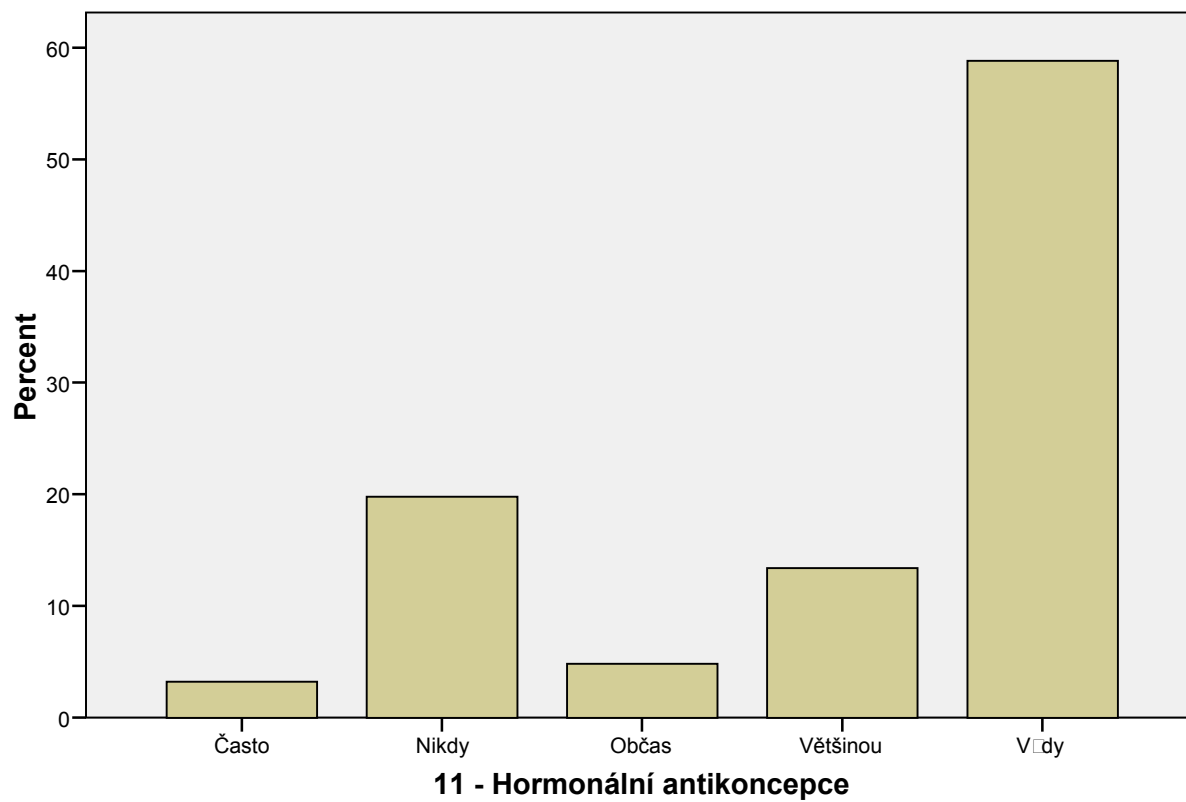
11 - Bez antikoncepce



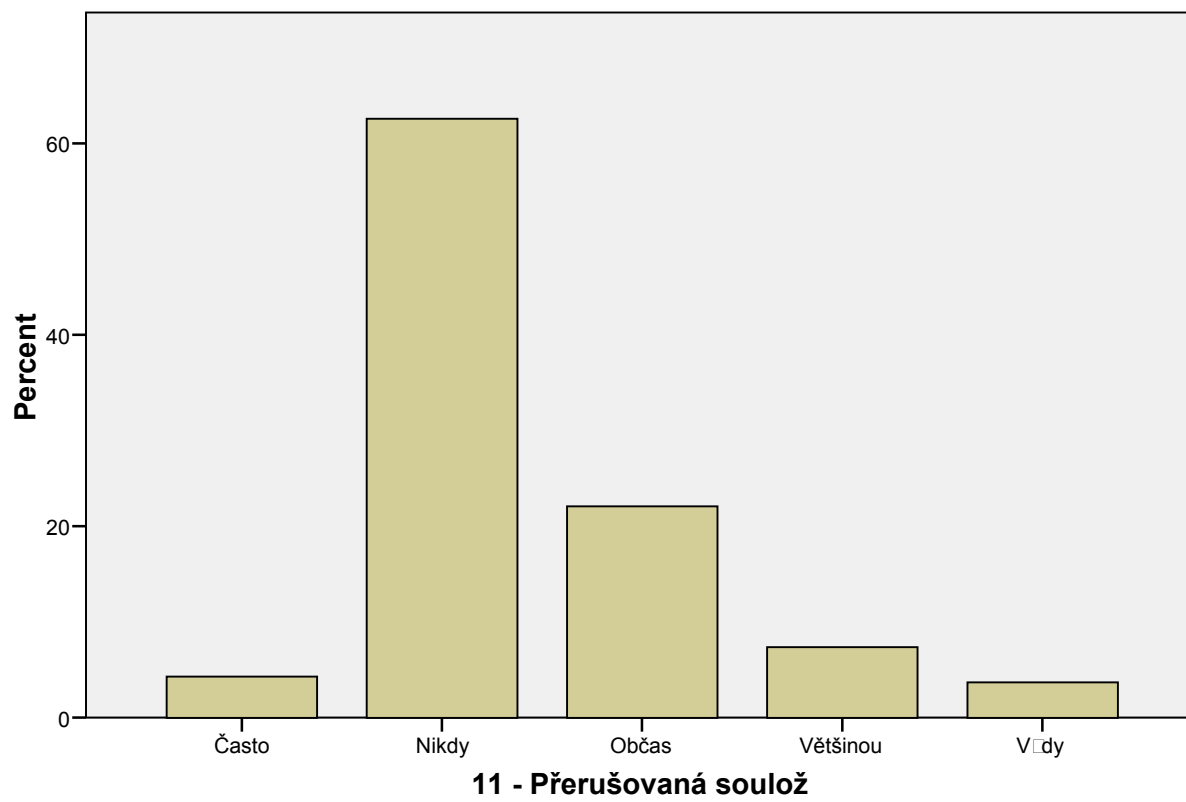
11 - Kondom



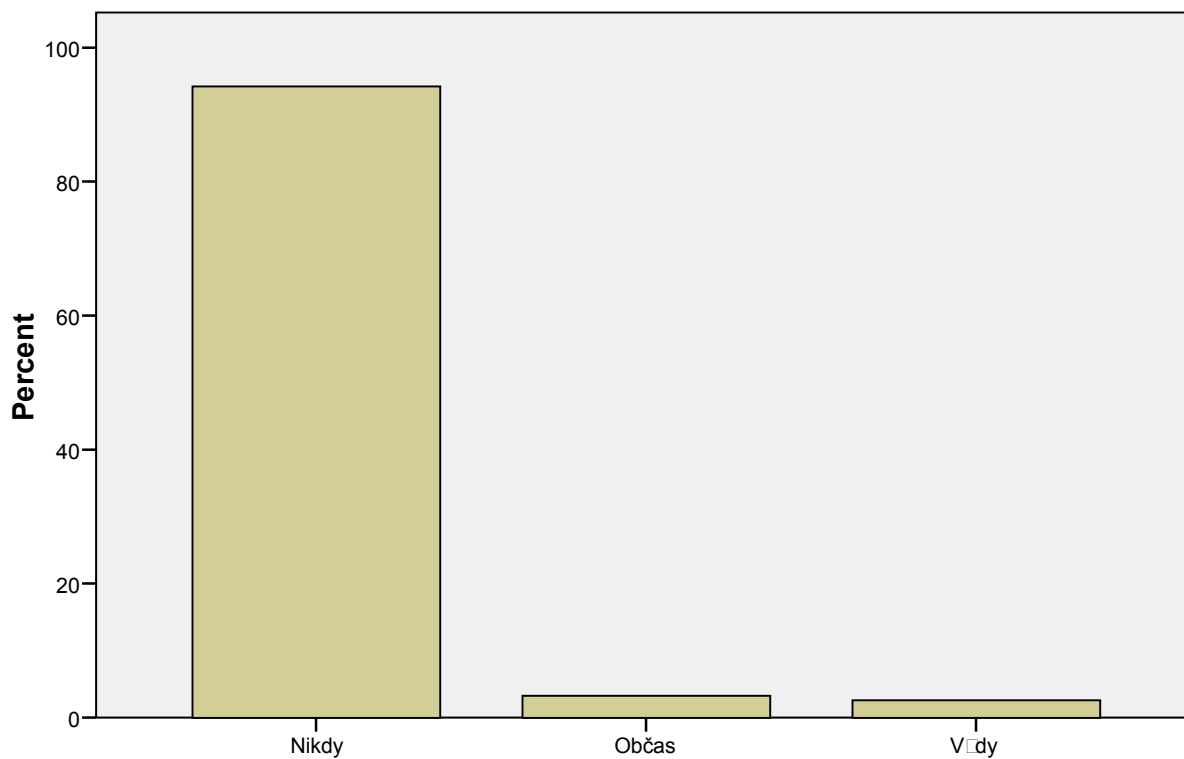
11 - Hormonální antikoncepce



11 - Přerušovaná soulož



11 - Jiný druh antikoncepce



11 - Jiný druh antikoncepce

FREQUENCIES

VARIABLES=@15Nemocne @15Anopohlavní nemoc @15Anozranění

/STATISTICS=MEAN MEDIAN

/BARCHART PERCENT

/ORDER= ANALYSIS .

Frequencies

Notes

Output Created	19-NOV-2010 23:02:47	
Comments		
Input	Active Dataset	DataSet2
	Filter	<none>
	Weight	<none>
	Split File	<none>
	N of Rows in Working Data File	224
Missing Value Handling	Definition of Missing	User-defined missing values are treated as missing.
	Cases Used	Statistics are based on all cases with valid data.
Syntax	<pre> FREQUENCIES VARIABLES=@15Nemocne @15Anopohlavninemoc @15Anozranini /STATISTICS=MEAN MEDIAN /BARCHART PERCENT /ORDER= ANALYSIS . </pre>	
Resources	Elapsed Time	0:00:00,42
	Processor Time	0:00:00,47

[DataSet2]

Statistics

		15 - Nemocne	15 - Ano, pohlavní nemoc	15 - Ano, zraniní
N	Valid	224	224	224
	Missing	0	0	0
Mean		,68	,04	,16
Median		1,00	,00	,00

Frequency Table

15 - Ano, pohlavní nemoc

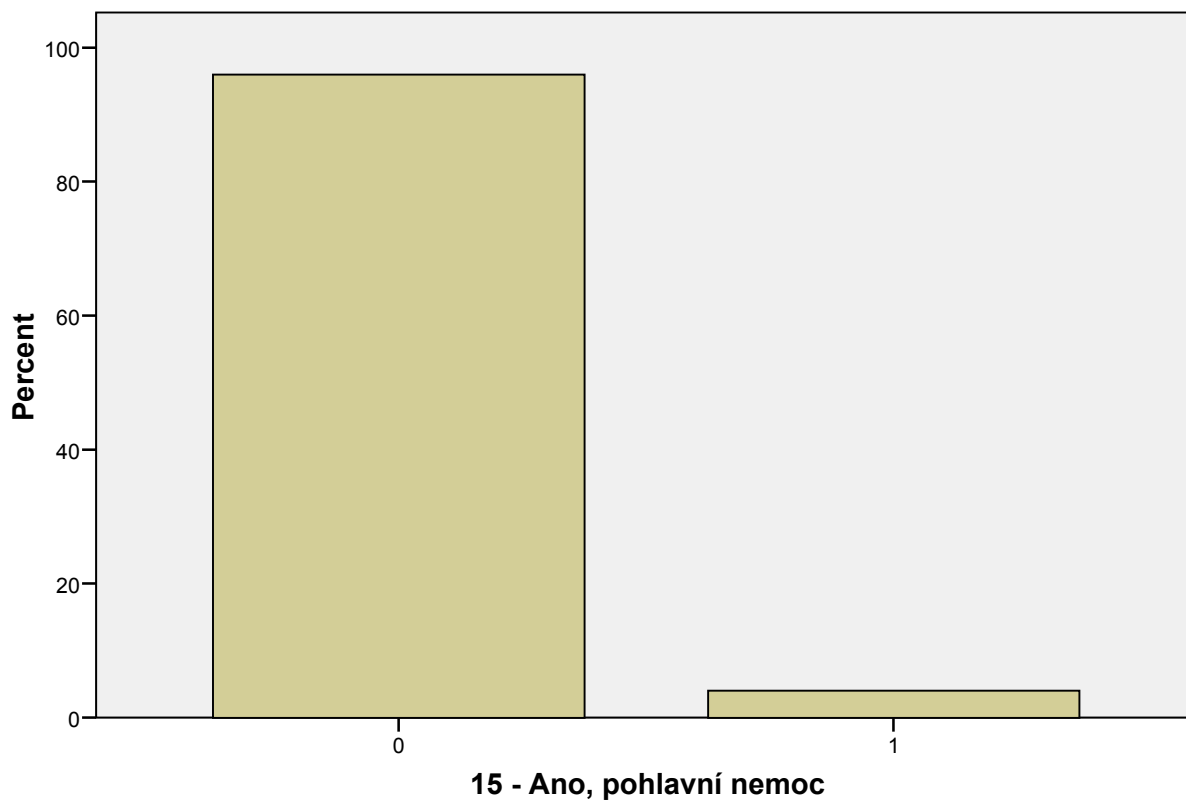
		Frequency	Percent	Valid Percent	Cumulative Percent
Valid	0	215	96,0	96,0	96,0
	1	9	4,0	4,0	100,0
	Total	224	100,0	100,0	

15 - Ano, zraniní

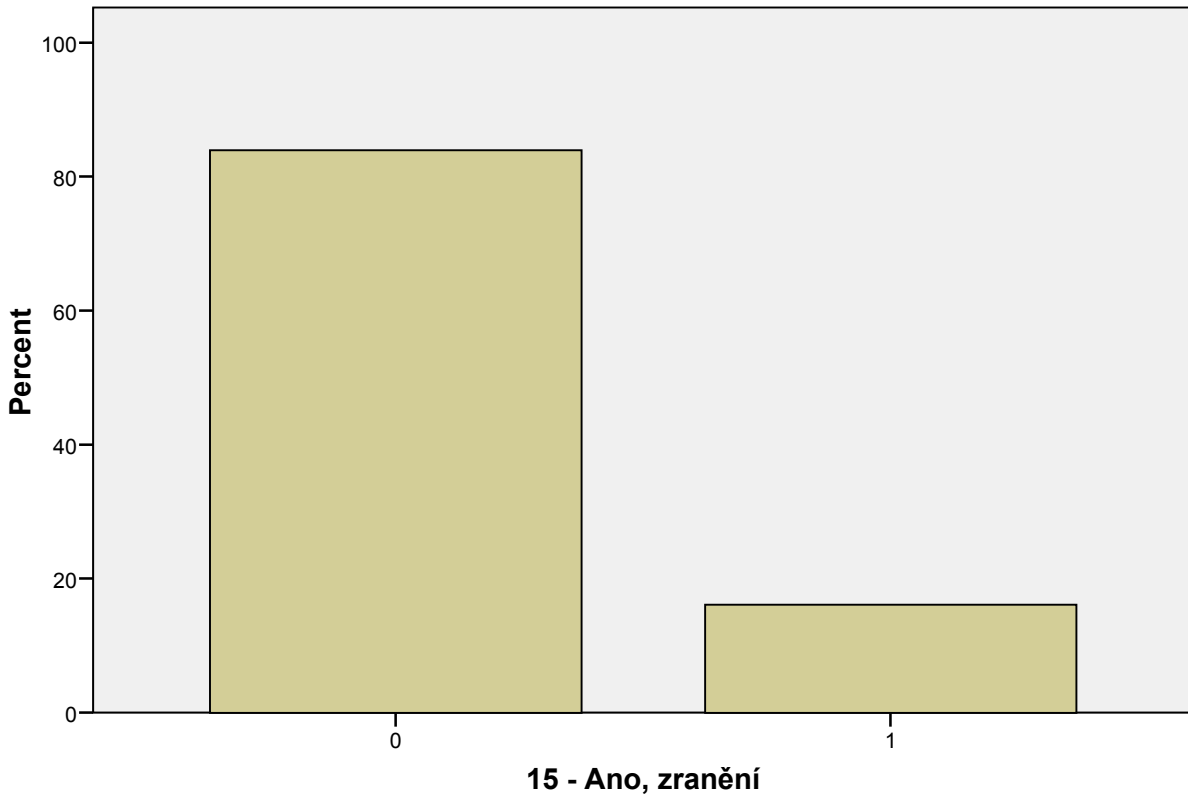
		Frequency	Percent	Valid Percent	Cumulative Percent
Valid	0	188	83,9	83,9	83,9
	1	36	16,1	16,1	100,0
	Total	224	100,0	100,0	

Bar Chart

15 - Ano, pohlavní nemoc



15 - Ano, zranění



```
FREQUENCIES
VARIABLES=@16Anointerupci @16AnoPostinor
/STATISTICS=MEAN MEDIAN
/BARCHART PERCENT
/ORDER= ANALYSIS .
```

Frequencies

Notes

Output Created	19-NOV-2010 23:04:29	
Comments		
Input	Active Dataset	DataSet2
	Filter	<none>
	Weight	<none>
	Split File	<none>
	N of Rows in Working Data File	224
Missing Value Handling	Definition of Missing	User-defined missing values are treated as missing.
	Cases Used	Statistics are based on all cases with valid data.
Syntax	<pre>FREQUENCIES VARIABLES=@16Anointerupci @16AnoPostinor /STATISTICS=MEAN MEDIAN /BARCHART PERCENT /ORDER= ANALYSIS .</pre>	
Resources	Elapsed Time	0:00:00,28
	Processor Time	0:00:00,31

Statistics

		16 - Ano, interupci	16 - Ano, Postinor
N	Valid	224	224
	Missing	0	0
Mean		,01	,20
Median		,00	,00

Frequency Table

16 - Ano, interupci

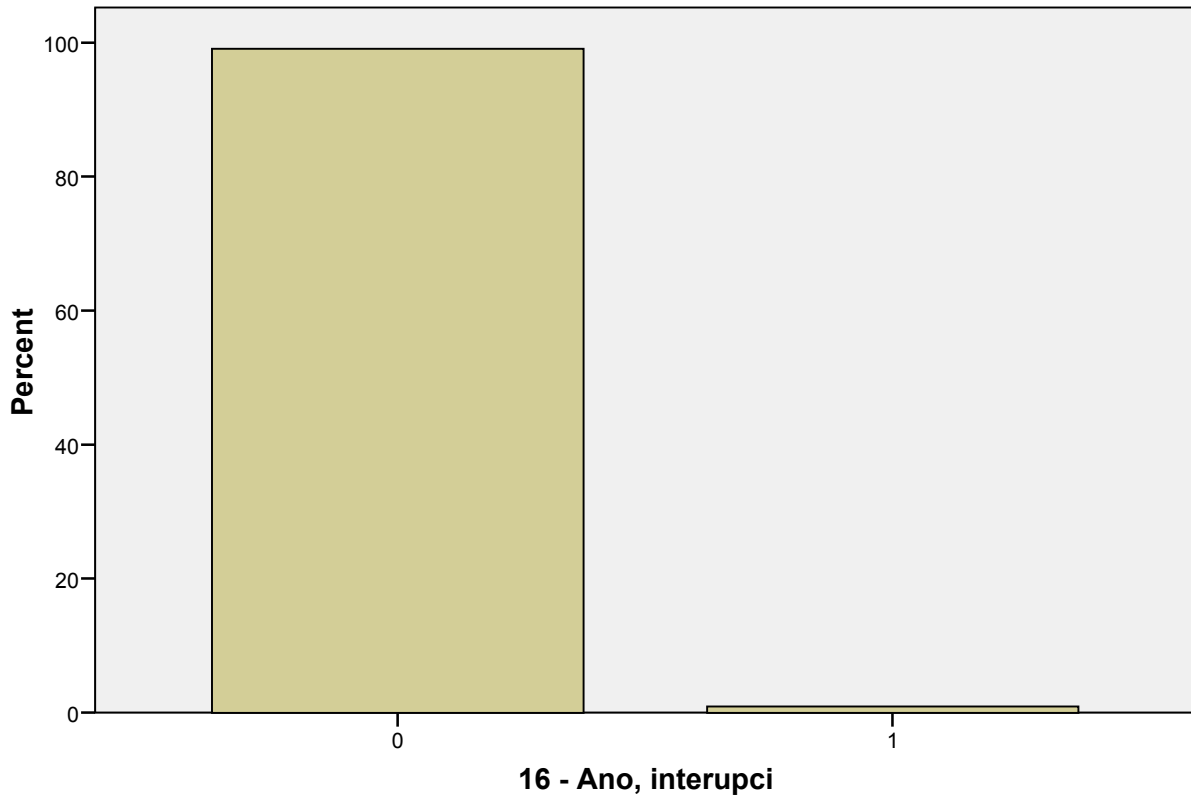
		Frequency	Percent	Valid Percent	Cumulative Percent
Valid	0	222	99,1	99,1	99,1
	1	2	,9	,9	100,0
Total		224	100,0	100,0	

16 - Ano, Postinor

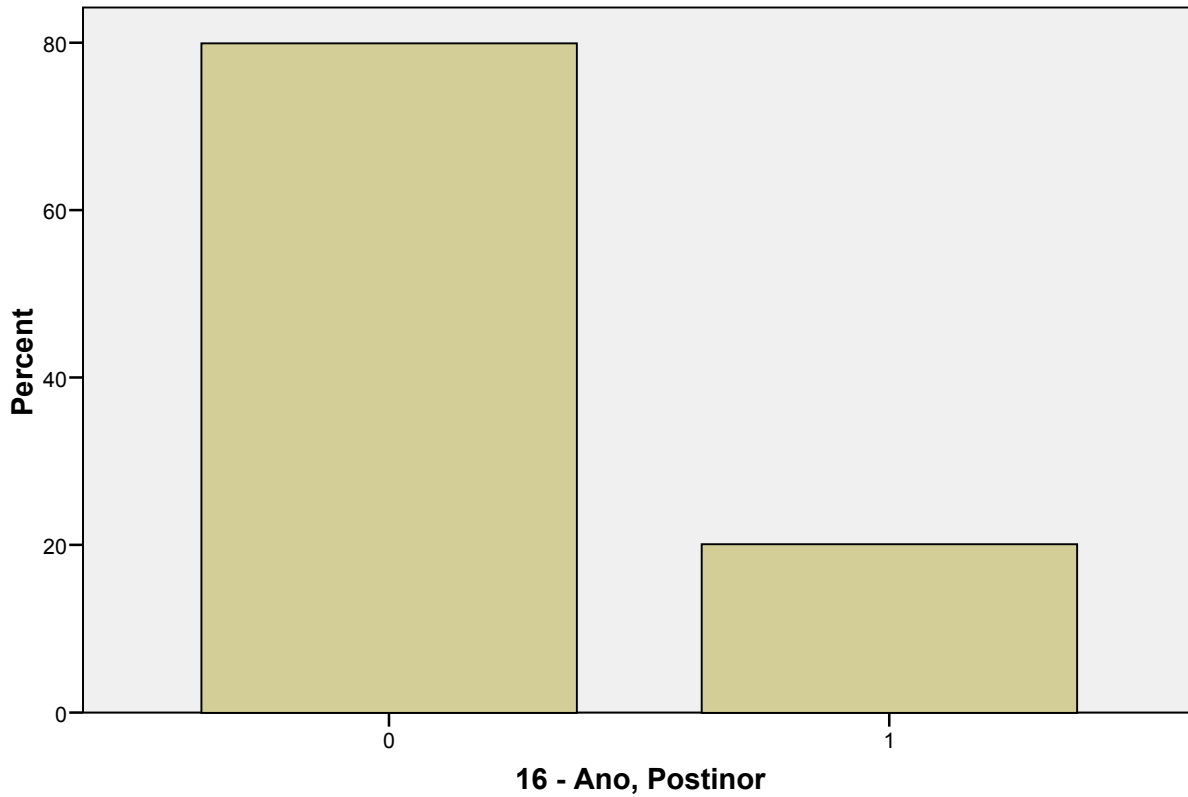
		Frequency	Percent	Valid Percent	Cumulative Percent
Valid	0	179	79,9	79,9	79,9
	1	45	20,1	20,1	100,0
Total		224	100,0	100,0	

Bar Chart

16 - Ano, interupci



16 - Ano, Postinor



```
FREQUENCIES  
VARIABLES=@17nejstaršisexpartner  
/STATISTICS=MEAN MEDIAN  
/BARCHART PERCENT  
/ORDER= ANALYSIS .
```

```
FREQUENCIES  
VARIABLES=@17nejstaršisexpartner  
/STATISTICS=MEAN MEDIAN  
/BARCHART PERCENT  
/ORDER= ANALYSIS .
```

Frequencies

Notes

Output Created		19-NOV-2010 23:17:19
Comments		
Input	Active Dataset	DataSet2
	Filter	<none>
	Weight	<none>
	Split File	<none>
	N of Rows in Working Data File	222
Missing Value Handling	Definition of Missing	User-defined missing values are treated as missing.
	Cases Used	Statistics are based on all cases with valid data.
Syntax		FREQUENCIES VARIABLES=@17nejstaršísexpartner /STATISTICS=MEAN MEDIAN /BARChart PERCENT /ORDER= ANALYSIS .
Resources	Elapsed Time	0:00:00,16
	Processor Time	0:00:00,17

[DataSet2]

Statistics

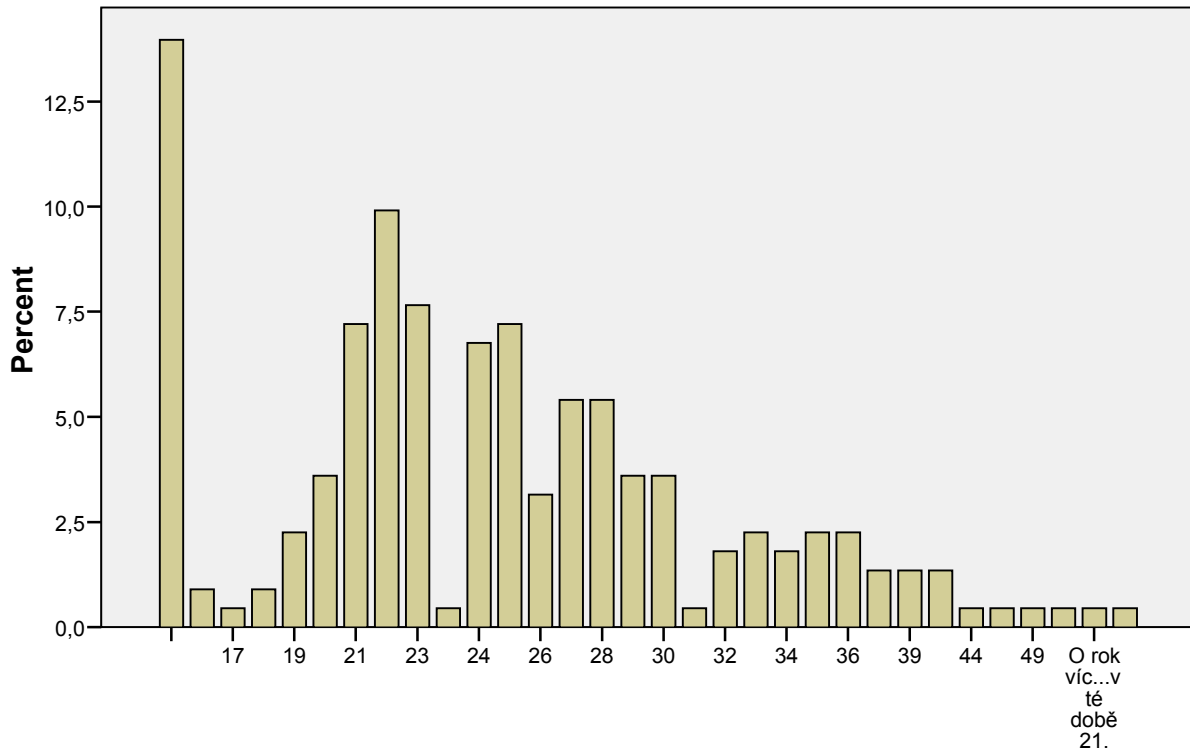
17 - nejstarší sex partner

N	Valid	222
	Missing	0

17 - nejstarší sex partner

	Frequency	Percent	Valid Percent	Cumulative Percent
Valid	31	14,0	14,0	14,0
16	2	,9	,9	14,9
17	1	,5	,5	15,3
18	2	,9	,9	16,2
19	5	2,3	2,3	18,5
20	8	3,6	3,6	22,1
21	16	7,2	7,2	29,3
22	22	9,9	9,9	39,2
23	17	7,7	7,7	46,8
23, kdy□mi bylo 22	1	,5	,5	47,3
24	15	6,8	6,8	54,1
25	16	7,2	7,2	61,3
26	7	3,2	3,2	64,4
27	12	5,4	5,4	69,8
28	12	5,4	5,4	75,2
29	8	3,6	3,6	78,8
30	8	3,6	3,6	82,4
31	1	,5	,5	82,9
32	4	1,8	1,8	84,7
33	5	2,3	2,3	86,9
34	4	1,8	1,8	88,7
35	5	2,3	2,3	91,0
36	5	2,3	2,3	93,2
38	3	1,4	1,4	94,6
39	3	1,4	1,4	95,9
40	3	1,4	1,4	97,3
44	1	,5	,5	97,7
45	1	,5	,5	98,2
49	1	,5	,5	98,6
53	1	,5	,5	99,1
O rok víc...v té dobi 21.	1	,5	,5	99,5
V□dy nejvíce stejní jako mni.	1	,5	,5	100,0
Total	222	100,0	100,0	

17 - nejstarší sex partner



17 - nejstarší sex partner

```
FREQUENCIES  
VARIABLES=@18Nevěra  
/STATISTICS=MEAN MEDIAN  
/BARCHART PERCENT  
/ORDER= ANALYSIS .
```

Frequencies

Notes

Output Created	19-NOV-2010 23:18:06	
Comments		
Input	Active Dataset	DataSet2
	Filter	<none>
	Weight	<none>
	Split File	<none>
	N of Rows in Working Data File	222
Missing Value Handling	Definition of Missing	User-defined missing values are treated as missing.
	Cases Used	Statistics are based on all cases with valid data.
Syntax	FREQUENCIES VARIABLES=@18Nevira /STATISTICS=MEAN MEDIAN /BARCHART PERCENT /ORDER= ANALYSIS .	
Resources	Elapsed Time	0:00:00,14
	Processor Time	0:00:00,20

[DataSet2]

Statistics

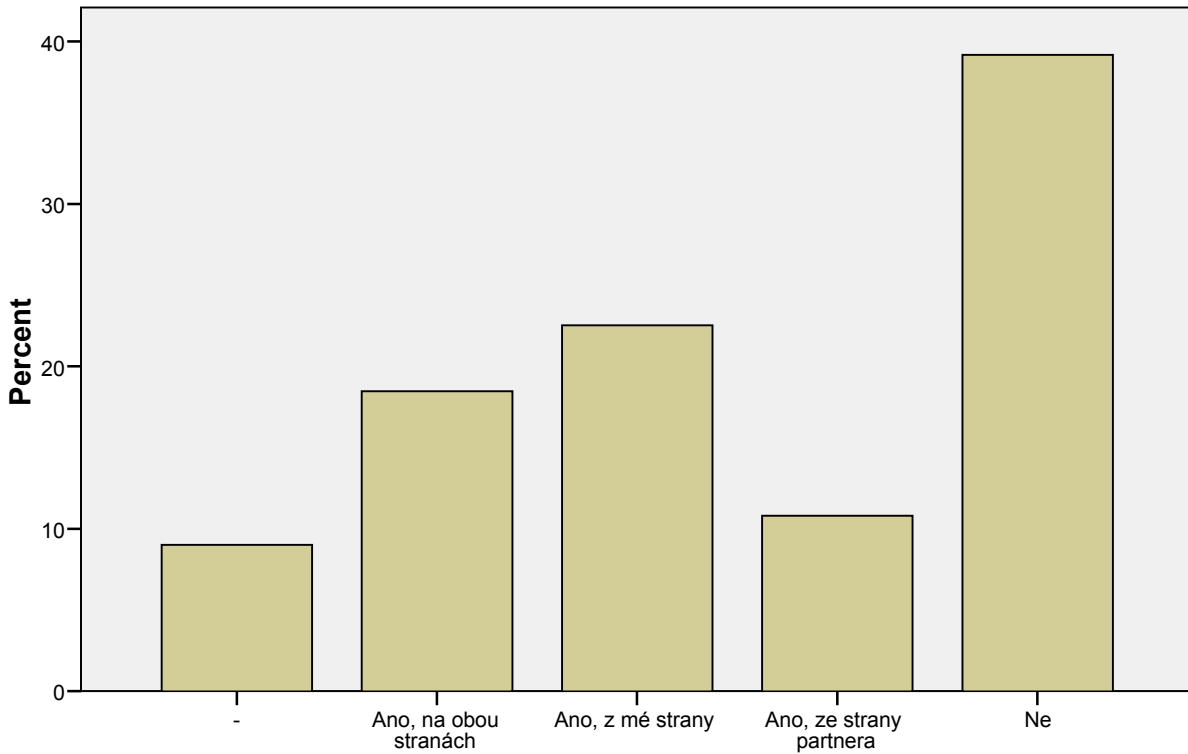
18 - Nevira

N	Valid	222
	Missing	0

18 - Nevira

	Frequency	Percent	Valid Percent	Cumulative Percent
Valid -	20	9,0	9,0	9,0
Ano, na obou stranách	41	18,5	18,5	27,5
Ano, z mé strany	50	22,5	22,5	50,0
Ano, ze strany partnera	24	10,8	10,8	60,8
Ne	87	39,2	39,2	100,0
Total	222	100,0	100,0	

18 - Nevěra



18 - Nevěra

```
FREQUENCIES
VARIABLES=@19SexpartneřizFSS
/STATISTICS=MEAN MEDIAN
/BARCHART PERCENT
/ORDER= ANALYSIS .
```

Frequencies

Notes

Output Created	19-NOV-2010 23:18:35	
Comments		
Input	Active Dataset	DataSet2
	Filter	<none>
	Weight	<none>
	Split File	<none>
	N of Rows in Working Data File	222
Missing Value Handling	Definition of Missing	User-defined missing values are treated as missing.
	Cases Used	Statistics are based on all cases with valid data.
Syntax	FREQUENCIES VARIABLES=@19SexpartneřizFSS /STATISTICS=MEAN MEDIAN /BARCHART PERCENT	
Resources	Elapsed Time	0:00:00,14
	Processor Time	0:00:00,17

Statistics

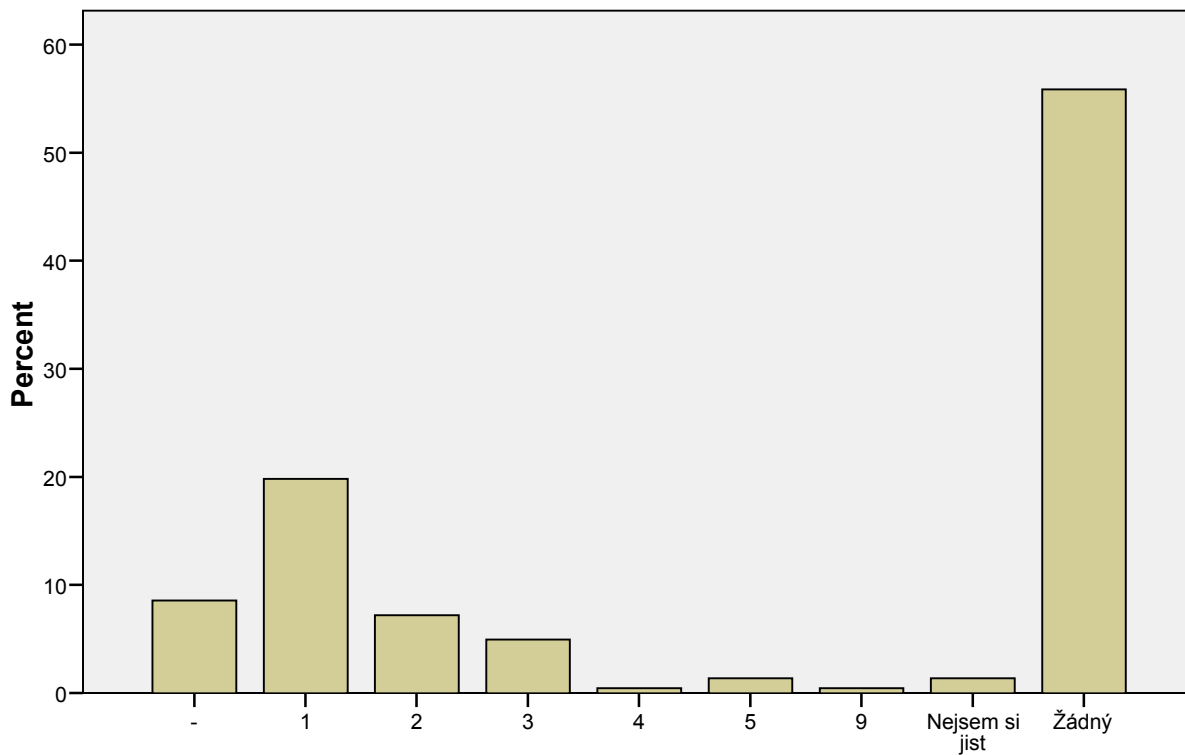
19 - Sex partneři z FSS

N	Valid	222
	Missing	0

19 - Sex partneři z FSS

	Frequency	Percent	Valid Percent	Cumulative Percent
Valid -	19	8,6	8,6	8,6
1	44	19,8	19,8	28,4
2	16	7,2	7,2	35,6
3	11	5,0	5,0	40,5
4	1	,5	,5	41,0
5	3	1,4	1,4	42,3
9	1	,5	,5	42,8
Nejsem si jist	3	1,4	1,4	44,1
Žádný	124	55,9	55,9	100,0
Total	222	100,0	100,0	

19 - Sex partneři z FSS



19 - Sex partneři z FSS

```

FREQUENCIES
VARIABLES=@20sexnaFSS
/STATISTICS=MEAN MEDIAN
/BARCHART PERCENT
/ORDER= ANALYSIS .
    
```

Frequencies

Notes

Output Created	19-NOV-2010 23:19:32	
Comments		
Input	Active Dataset	DataSet2
	Filter	<none>
	Weight	<none>
	Split File	<none>
	N of Rows in Working Data File	222
Missing Value Handling	Definition of Missing	User-defined missing values are treated as missing.
	Cases Used	Statistics are based on all cases with valid data.
Syntax	FREQUENCIES VARIABLES=@20sexnaFSS /STATISTICS=MEAN MEDIAN /BARCHART PERCENT /ORDER= ANALYSIS .	
Resources	Elapsed Time	0:00:00,16
	Processor Time	0:00:00,17

[DataSet2]

Statistics

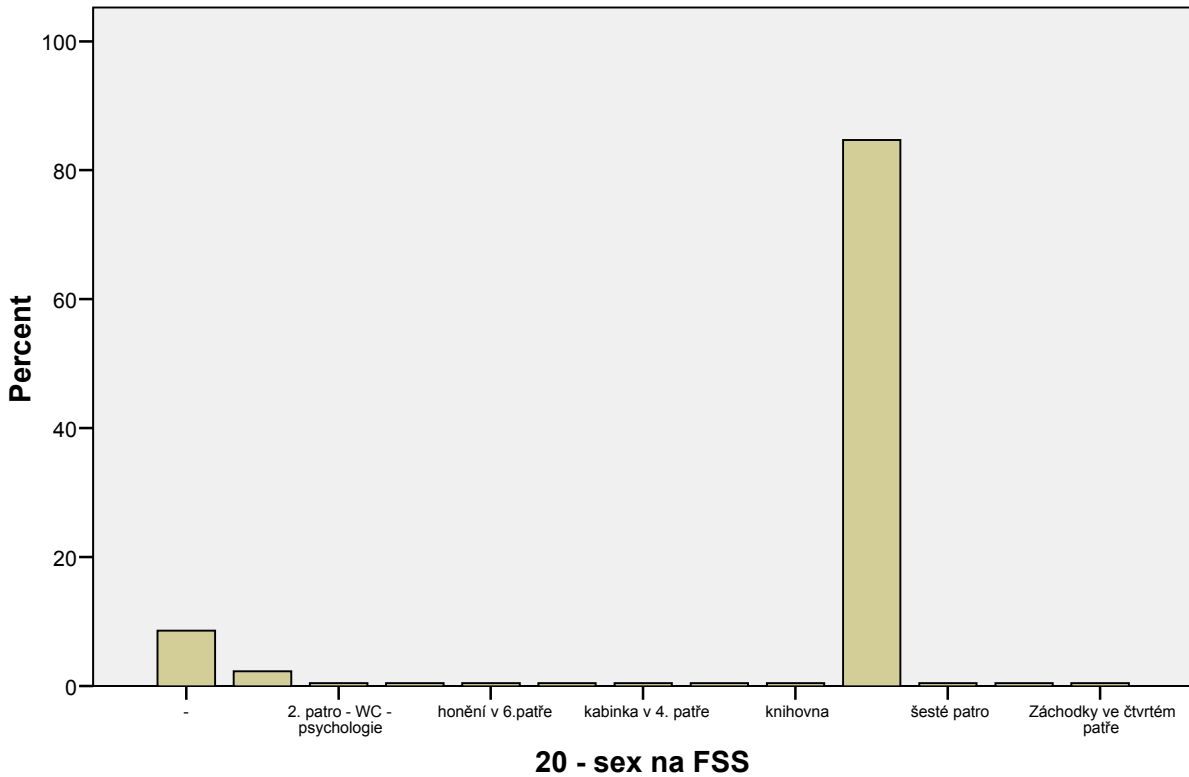
20 - sex na FSS

N	Valid	222
	Missing	0

20 - sex na FSS

	Frequency	Percent	Valid Percent	Cumulative Percent
Valid -	19	8,6	8,6	8,6
	5	2,3	2,3	10,8
2. patro - WC - psychologie	1	,5	,5	11,3
atrium, gauèe	1	,5	,5	11,7
honiní v 6.patøe	1	,5	,5	12,2
Chodba v suterénu	1	,5	,5	12,6
kabinka v 4. patøe	1	,5	,5	13,1
kanceláø	1	,5	,5	13,5
knihovna	1	,5	,5	14,0
Ne	188	84,7	84,7	98,6
šesté patro	1	,5	,5	99,1
záchodky	1	,5	,5	99,5
Záchodky ve ètvtém patøe	1	,5	,5	100,0
Total	222	100,0	100,0	

20 - sex na FSS



```
FREQUENCIES
VARIABLES=@21chcesenaFSS
/STATISTICS=MEAN MEDIAN
/BARCHART PERCENT
/ORDER= ANALYSIS .
```

Frequencies

Notes

Output Created	19-NOV-2010 23:20:12	
Comments		
Input	Active Dataset	DataSet2
	Filter	<none>
	Weight	<none>
	Split File	<none>
	N of Rows in Working Data File	222
Missing Value Handling	Definition of Missing	User-defined missing values are treated as missing.
	Cases Used	Statistics are based on all cases with valid data.
Syntax	FREQUENCIES VARIABLES=@21chcesenaFSS /STATISTICS=MEAN MEDIAN /BARCHART PERCENT /ORDER= ANALYSIS .	
Resources	Elapsed Time	0:00:00,16
	Processor Time	0:00:00,19

Statistics

21 - chce se na FSS

N	Valid	222
	Missing	0

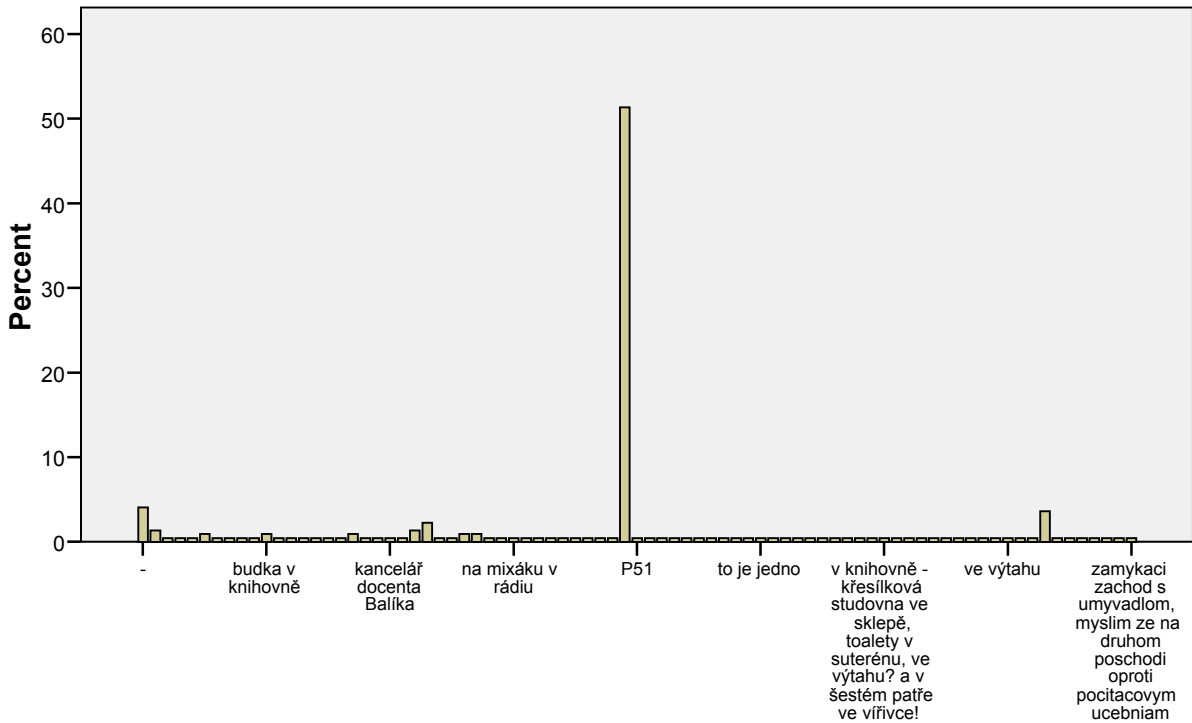
21 - chce se na FSS

	Frequency	Percent	Valid Percent	Cumulative Percent
Valid -	9	4,1	4,1	4,1
	3	1,4	1,4	5,4
6. patro	1	,5	,5	5,9
6. patro, sedačky v 5. patøe	1	,5	,5	6,3
6.patro atrium	1	,5	,5	6,8
Atrium	2	,9	,9	7,7
átrium	1	,5	,5	8,1
Aula	1	,5	,5	8,6
aula po zavíraèce	1	,5	,5	9,0
budka v knihovni	1	,5	,5	9,5
depozit knihovny, výtah	2	,9	,9	10,4
Ditský koutek.	1	,5	,5	10,8
dvorana ve 3.patøe, knihovna	1	,5	,5	11,3
gauè v atriu	1	,5	,5	11,7
gauèíky pøed katedrou sociologie, je to tam trochu zašívarna	1	,5	,5	12,2
gauèíky v atriu	1	,5	,5	12,6
kabinet	1	,5	,5	13,1
kabinet :D	2	,9	,9	14,0
kanceláø	1	,5	,5	14,4
kanceláø docenta Balíka	1	,5	,5	14,9
kde by to šlo -)	1	,5	,5	15,3
kdekoliv	1	,5	,5	15,8
knihovna	3	1,4	1,4	17,1
Knihovna	5	2,3	2,3	19,4
Krmitko	1	,5	,5	19,8
Krmitko	1	,5	,5	20,3
køesílka	2	,9	,9	21,2
Mezinárodní politologický institú	2	,9	,9	22,1
Na díkanovi stole a na pohovkách v atriu	1	,5	,5	22,5
na mixáku v rádiu	1	,5	,5	23,0
Na okne od átria)	1	,5	,5	23,4
na pohovce	1	,5	,5	23,9
na pohovkách	1	,5	,5	24,3
na pytlech s pískem u depozitu knihovny	1	,5	,5	24,8
na støeše atria	1	,5	,5	25,2
na støeše za zadním schodištím	1	,5	,5	25,7
na záchodech (tak 4-5 patro)	1	,5	,5	26,1
nádvoøí nad átriem	1	,5	,5	26,6
	1	,5	,5	27,0

21 - chce se na FSS

	Frequency	Percent	Valid Percent	Cumulative Percent
Valid Ne	114	51,4	51,4	78,4
P51	1	,5	,5	78,8
podzemí	1	,5	,5	79,3
pohovky v 5. patøe, dvoreèek	1	,5	,5	79,7
sedaèky v atriu, èajovna v krmítku	1	,5	,5	80,2
sedaèky v pátém patøe	1	,5	,5	80,6
schody u atria	1	,5	,5	81,1
studio Rádia R	1	,5	,5	81,5
stùl tajemníka, wc pro postiženèé, krmítko pod kávovarem	1	,5	,5	82,0
telefonna budka v knihovne	1	,5	,5	82,4
telefonní budka v knihovni	1	,5	,5	82,9
to je jedno	1	,5	,5	83,3
toalety, šesté patro, knihovna	1	,5	,5	83,8
u dekana v kancelarii :)	1	,5	,5	84,2
U34	1	,5	,5	84,7
uèebna	1	,5	,5	85,1
uèebna 4.5.5	1	,5	,5	85,6
v atriu	1	,5	,5	86,0
v atriu u auly	1	,5	,5	86,5
v budce v knihovni! :D	1	,5	,5	86,9
v kabinetu profesora	1	,5	,5	87,4
v knihovni - køesílková studovna ve sklepi, toalety v suterènu, ve výtahu? a v šestém patøe ve víøivce!	1	,5	,5	87,8
v knihovne	1	,5	,5	88,3
v knihovni	1	,5	,5	88,7
v knihovni, na schodech	1	,5	,5	89,2
V místnosti dikanátu	1	,5	,5	89,6
v nijaké uèebni	1	,5	,5	90,1
v tajném zákoutí :)	1	,5	,5	90,5
v telefonní budce v knihovni, atrium	1	,5	,5	91,0
ve spolkovni	1	,5	,5	91,4
ve tøide	1	,5	,5	91,9
ve výtahu	1	,5	,5	92,3
vo vlastnej kancelárii	1	,5	,5	92,8
výtah	1	,5	,5	93,2
výtah	8	3,6	3,6	96,8
výtah, ta hrozni pohodlná køesla ve tøetím patøe :)	1	,5	,5	97,3
wc	1	,5	,5	97,7
WC	1	,5	,5	98,2
WC v 6.patøe	1	,5	,5	98,6
wc, výtah	1	,5	,5	99,1
záchodky, sedaèky v 5. patøe, 6. patro	1	,5	,5	99,5
zamykaci zachod s umyvadlom, myslim ze na druhom poschodi oproti pocitacovym ucebniam	1	,5	,5	100,0
Total	222	100,0	100,0	

21 - chce se na FSS



21 - chce se na FSS

```
FREQUENCIES
VARIABLES=@22MasturbacenaFSS
/STATISTICS=MEAN MEDIAN
/BARCHART PERCENT
/ORDER= ANALYSIS .
```

```
FREQUENCIES
VARIABLES=@22MasturbacenaFSS
/STATISTICS=MEAN MEDIAN
/BARCHART PERCENT
/ORDER= ANALYSIS .
```

Frequencies

Notes

Output Created	19-NOV-2010 23:23:52	
Comments		
Input	Active Dataset	DataSet2
	Filter	<none>
	Weight	<none>
	Split File	<none>
	N of Rows in Working Data File	221
Missing Value Handling	Definition of Missing	User-defined missing values are treated as missing.
	Cases Used	Statistics are based on all cases with valid data.
Syntax	FREQUENCIES VARIABLES=@22Masturbacena FSS /STATISTICS=MEAN MEDIAN /BARCHART PERCENT /ORDER= ANALYSIS .	
Resources	Elapsed Time	0:00:00,14
	Processor Time	0:00:00,20

[DataSet2]

Statistics

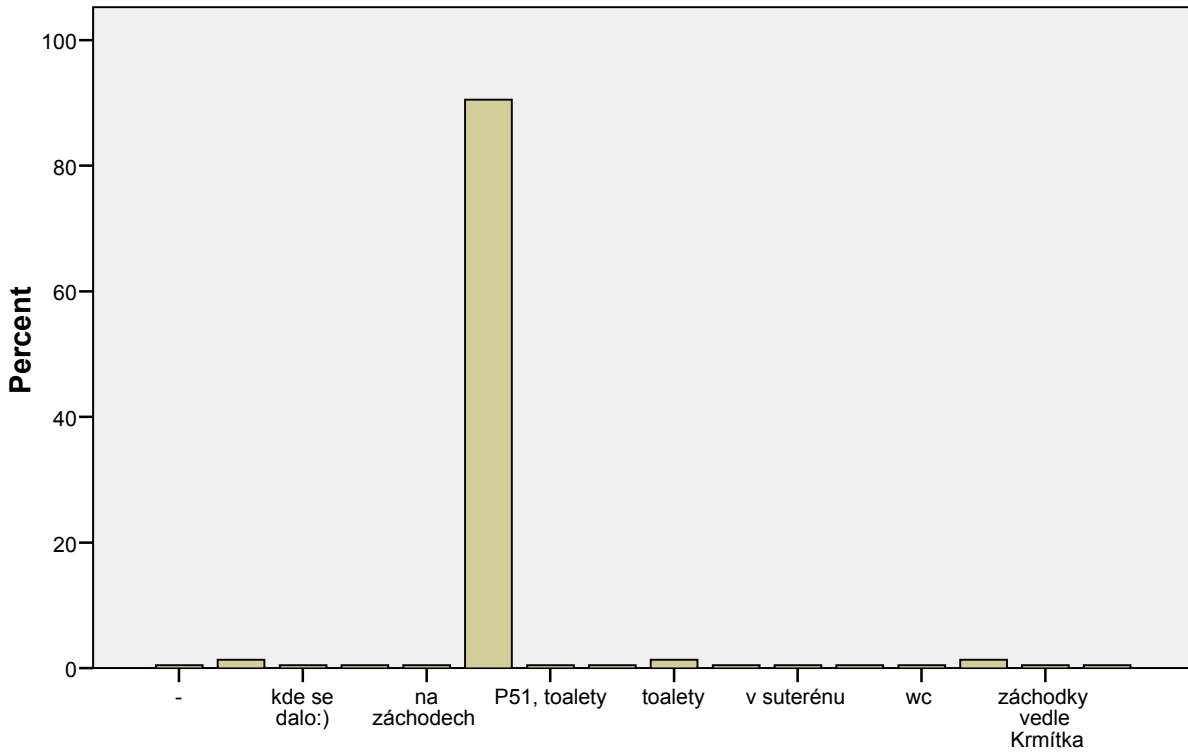
22 - Masturbace na FSS

N	Valid	221
	Missing	0

22 - Masturbace na FSS

	Frequency	Percent	Valid Percent	Cumulative Percent
Valid -	1	,5	,5	,5
	3	1,4	1,4	1,8
kde se dalo:)	1	,5	,5	2,3
na toaletách	1	,5	,5	2,7
na záchodech	1	,5	,5	3,2
Ne	200	90,5	90,5	93,7
P51, toalety	1	,5	,5	94,1
toaleta	1	,5	,5	94,6
toalety	3	1,4	1,4	95,9
v knihovni	1	,5	,5	96,4
v suterénu	1	,5	,5	96,8
výtah	1	,5	,5	97,3
wc	1	,5	,5	97,7
WC	3	1,4	1,4	99,1
záchodky vedle Krmítka	1	,5	,5	99,5
záchody	1	,5	,5	100,0
Total	221	100,0	100,0	

22 - Masturbace na FSS



22 - Masturbace na FSS

```
FREQUENCIES
VARIABLES=@23sexyobor
/STATISTICS=MEAN MEDIAN
/BARCHART PERCENT
/ORDER= ANALYSIS .
```

Frequencies

Notes

Output Created	19-NOV-2010 23:24:25	
Comments		
Input	Active Dataset	DataSet2
	Filter	<none>
	Weight	<none>
	Split File	<none>
	N of Rows in Working Data File	221
Missing Value Handling	Definition of Missing	User-defined missing values are treated as missing.
	Cases Used	Statistics are based on all cases with valid data.
Syntax	FREQUENCIES VARIABLES=@23sexyobor /STATISTICS=MEAN MEDIAN /BARCHART PERCENT /ORDER= ANALYSIS .	
Resources	Elapsed Time	0:00:00,14
	Processor Time	0:00:00,16

[DataSet2]

Statistics

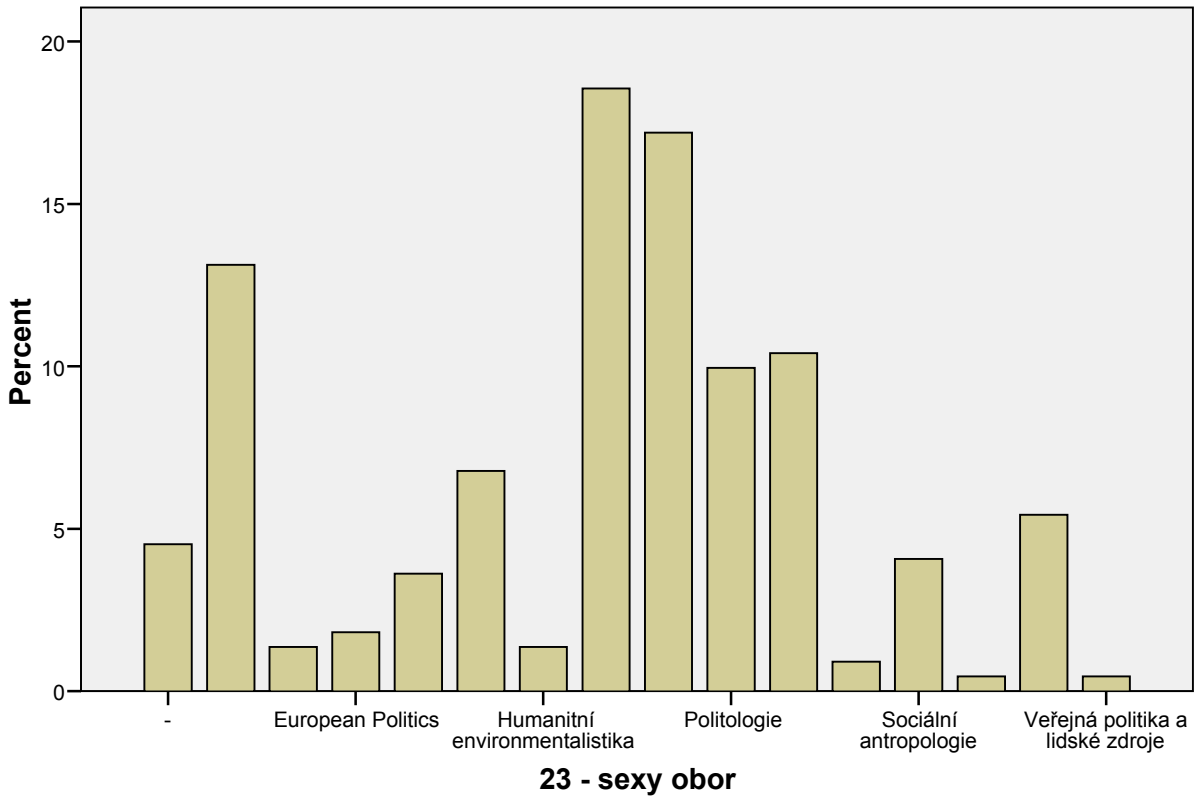
23 - sexy obor

N	Valid	221
	Missing	0

23 - sexy obor

	Frequency	Percent	Valid Percent	Cumulative Percent
Valid -	10	4,5	4,5	4,5
Bezpečnostní a strategická studia	29	13,1	13,1	17,6
Environmentální studia	3	1,4	1,4	19,0
European Politics	4	1,8	1,8	20,8
Evropská studia	8	3,6	3,6	24,4
Genderová studia	15	6,8	6,8	31,2
Humanitní environmentalistika	3	1,4	1,4	32,6
Mediální studia a žurnalistika	41	18,6	18,6	51,1
Mezinárodní vztahy	38	17,2	17,2	68,3
Politologie	22	10,0	10,0	78,3
Psychologie	23	10,4	10,4	88,7
Psychoterapeutická studia	2	,9	,9	89,6
Sociální antropologie	9	4,1	4,1	93,7
Sociální politika a sociální práce	1	,5	,5	94,1
Sociologie	12	5,4	5,4	99,5
Veřejná politika a lidské zdroje	1	,5	,5	100,0
Total	221	100,0	100,0	

23 - sexy obor



```
FREQUENCIES
VARIABLES=@24nesexyobor
/STATISTICS=MEAN MEDIAN
/BARCHART PERCENT
/ORDER= ANALYSIS .
```

Frequencies

Notes

Output Created	19-NOV-2010 23:25:12	
Comments		
Input	Active Dataset	DataSet2
	Filter	<none>
	Weight	<none>
	Split File	<none>
	N of Rows in Working Data File	221
Missing Value Handling	Definition of Missing	User-defined missing values are treated as missing.
	Cases Used	Statistics are based on all cases with valid data.
Syntax	FREQUENCIES VARIABLES=@24nesexyobor /STATISTICS=MEAN MEDIAN /BARCHART PERCENT /ORDER= ANALYSIS .	
Resources	Elapsed Time	0:00:00,14
	Processor Time	0:00:00,17

[DataSet2]

Statistics

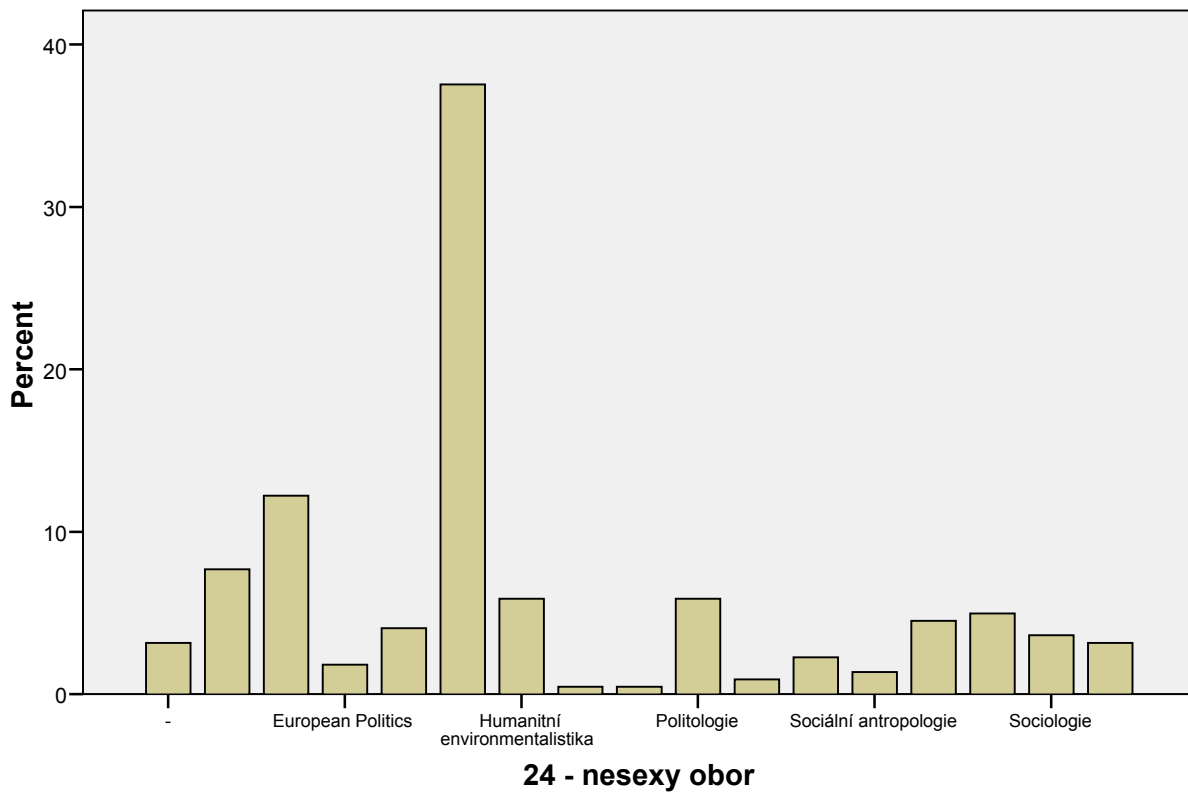
24 - nesexy obor

N	Valid	221
	Missing	0

24 - nesexy obor

	Frequency	Percent	Valid Percent	Cumulative Percent
Valid -	7	3,2	3,2	3,2
Bezpečnostní a strategická studia	17	7,7	7,7	10,9
Environmentální studia	27	12,2	12,2	23,1
European Politics	4	1,8	1,8	24,9
Evropská studia	9	4,1	4,1	29,0
Genderová studia	83	37,6	37,6	66,5
Humanitní environmentalistika	13	5,9	5,9	72,4
Mediální studia a žurnalistika	1	,5	,5	72,9
Mezinárodní vztahy	1	,5	,5	73,3
Politologie	13	5,9	5,9	79,2
Psychologie	2	,9	,9	80,1
Psychoterapeutická studia	5	2,3	2,3	82,4
Sociální antropologie	3	1,4	1,4	83,7
Sociální politika a sociální práce	10	4,5	4,5	88,2
Sociální práce	11	5,0	5,0	93,2
Sociologie	8	3,6	3,6	96,8
Veřejná politika a lidské zdroje	7	3,2	3,2	100,0
Total	221	100,0	100,0	

24 - nesexy obor



```
FREQUENCIES  
VARIABLES=@25Svyučujícím  
/STATISTICS=MEAN MEDIAN  
/BARCHART PERCENT  
/ORDER= ANALYSIS .
```

```
FREQUENCIES  
VARIABLES=@25Svyučujícím  
/STATISTICS=MEAN MEDIAN  
/BARCHART PERCENT  
/ORDER= ANALYSIS .
```

Frequencies

Notes

Output Created	19-NOV-2010 23:30:24	
Comments		
Input	Active Dataset	DataSet2
	Filter	<none>
	Weight	<none>
	Split File	<none>
	N of Rows in Working Data File	220
Missing Value Handling	Definition of Missing	User-defined missing values are treated as missing.
	Cases Used	Statistics are based on all cases with valid data.
Syntax	FREQUENCIES VARIABLES=@25Svyuèujícím /STATISTICS=MEAN MEDIAN /BARCHART PERCENT /ORDER= ANALYSIS .	
Resources	Elapsed Time	0:00:00,14
	Processor Time	0:00:00,19

[DataSet2]

Statistics

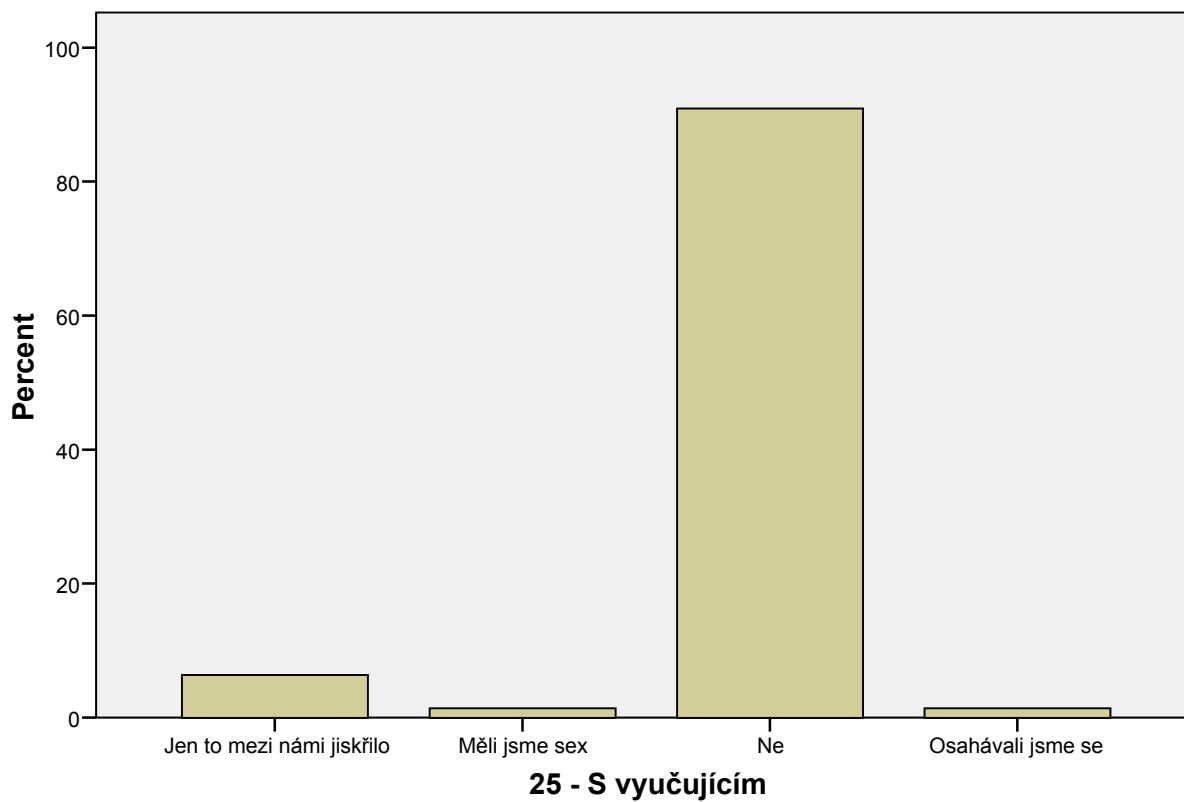
25 - S vyuèujícím

N	Valid	220
	Missing	0

25 - S vyuèujícím

	Frequency	Percent	Valid Percent	Cumulative Percent
Valid Jen to mezi námi jiskøilo	14	6,4	6,4	6,4
Mili jsme sex	3	1,4	1,4	7,7
Ne	200	90,9	90,9	98,6
Osahávali jsme se	3	1,4	1,4	100,0
Total	220	100,0	100,0	

25 - S vyučujícím



```
FREQUENCIES  
VARIABLES=@26Ovlivnilotovysledek  
/STATISTICS=MEAN MEDIAN  
/BARCHART PERCENT  
/ORDER= ANALYSIS .
```

```
FREQUENCIES  
VARIABLES=@27sexypedagogove  
/STATISTICS=MEAN MEDIAN  
/BARCHART PERCENT  
/ORDER= ANALYSIS .
```

Frequencies

Notes

Output Created	19-NOV-2010 23:31:24	
Comments		
Input	Active Dataset	DataSet2
	Filter	<none>
	Weight	<none>
	Split File	<none>
	N of Rows in Working Data File	220
Missing Value Handling	Definition of Missing	User-defined missing values are treated as missing.
	Cases Used	Statistics are based on all cases with valid data.
Syntax	FREQUENCIES VARIABLES=@27sexypedagogové /STATISTICS=MEAN MEDIAN /BARCHART PERCENT /ORDER= ANALYSIS .	
Resources	Elapsed Time	0:00:00,16
	Processor Time	0:00:00,23

[DataSet2]

Statistics

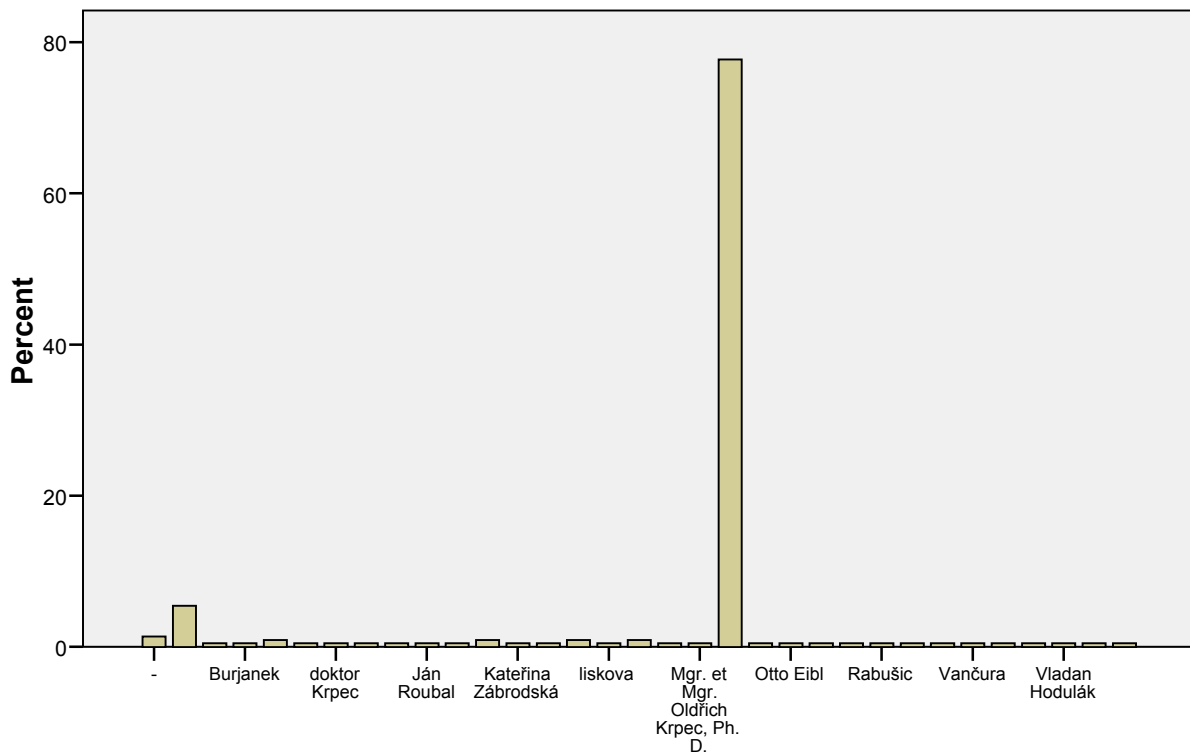
27 - sexy pedagogové

N	Valid	220
	Missing	0

27 - sexy pedagogové

	Frequency	Percent	Valid Percent	Cumulative Percent
Valid -	3	1,4	1,4	1,4
	1	,5	,5	1,8
1	40	18,2	18,2	20,0
2	48	21,8	21,8	41,8
3	36	16,4	16,4	58,2
4	16	7,3	7,3	65,5
5	12	5,5	5,5	70,9
6	1	,5	,5	71,4
jako nejsem gay, ale především učitelé mužů jsou docela fešáci, u žen je to slabší	1	,5	,5	71,8
málo žen v oboru	1	,5	,5	72,3
moc jich zatím neznám	1	,5	,5	72,7
nevím	1	,5	,5	73,2
pouze pedagogy	1	,5	,5	73,6
velké množství doktorandů, doktorandek a mladých doktorů	1	,5	,5	74,1
Žádného	57	25,9	25,9	100,0
Total	220	100,0	100,0	

28 - Pedagogové ve fantaziích



28 - Pedagogové ve fantaziích

FREQUENCIES

VARIABLES=@29Obtěžovánípedagogem

/STATISTICS=MEAN MEDIAN

/BARCHART PERCENT

/ORDER= ANALYSIS .

Frequencies

Notes

Output Created	19-NOV-2010 23:35:04	
Comments		
Input	Active Dataset	DataSet2
	Filter	<none>
	Weight	<none>
	Split File	<none>
	N of Rows in Working Data File	220
Missing Value Handling	Definition of Missing	User-defined missing values are treated as missing.
	Cases Used	Statistics are based on all cases with valid data.
Syntax	FREQUENCIES VARIABLES=@29 Obtiřování pedagogem /STATISTICS=MEAN MEDIAN /BARCHART PERCENT /ORDER= ANALYSIS .	
Resources	Elapsed Time	0:00:00,14
	Processor Time	0:00:00,20

[DataSet2]

Statistics

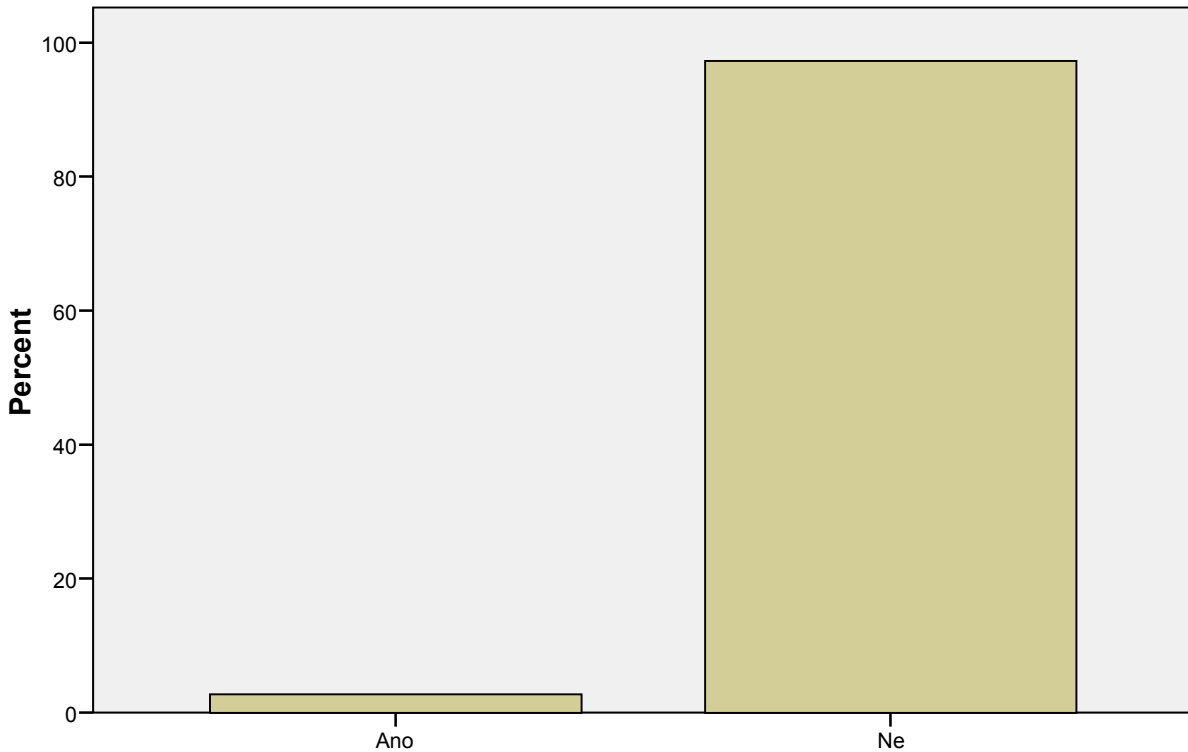
29 - Obtiřování pedagogem

N	Valid	220
	Missing	0

29 - Obtiřování pedagogem

		Frequency	Percent	Valid Percent	Cumulative Percent
Valid	Ano	6	2,7	2,7	2,7
	Ne	214	97,3	97,3	100,0
	Total	220	100,0	100,0	

29 - Obtěžování pedagogem



29 - Obtěžování pedagogem

```
FREQUENCIES
VARIABLES=@30pornoveškole
/STATISTICS=MEAN MEDIAN
/BARCHART PERCENT
/ORDER= ANALYSIS .
```

Frequencies

Notes

Output Created	19-NOV-2010 23:35:49	
Comments		
Input	Active Dataset	DataSet2
	Filter	<none>
	Weight	<none>
	Split File	<none>
	N of Rows in Working Data File	220
Missing Value Handling	Definition of Missing	User-defined missing values are treated as missing.
	Cases Used	Statistics are based on all cases with valid data.
Syntax	FREQUENCIES VARIABLES=@30pornoveškole /STATISTICS=MEAN MEDIAN /BARCHART PERCENT /ORDER= ANALYSIS .	
Resources	Elapsed Time	0:00:00,14
	Processor Time	0:00:00,19

[DataSet2]

Statistics

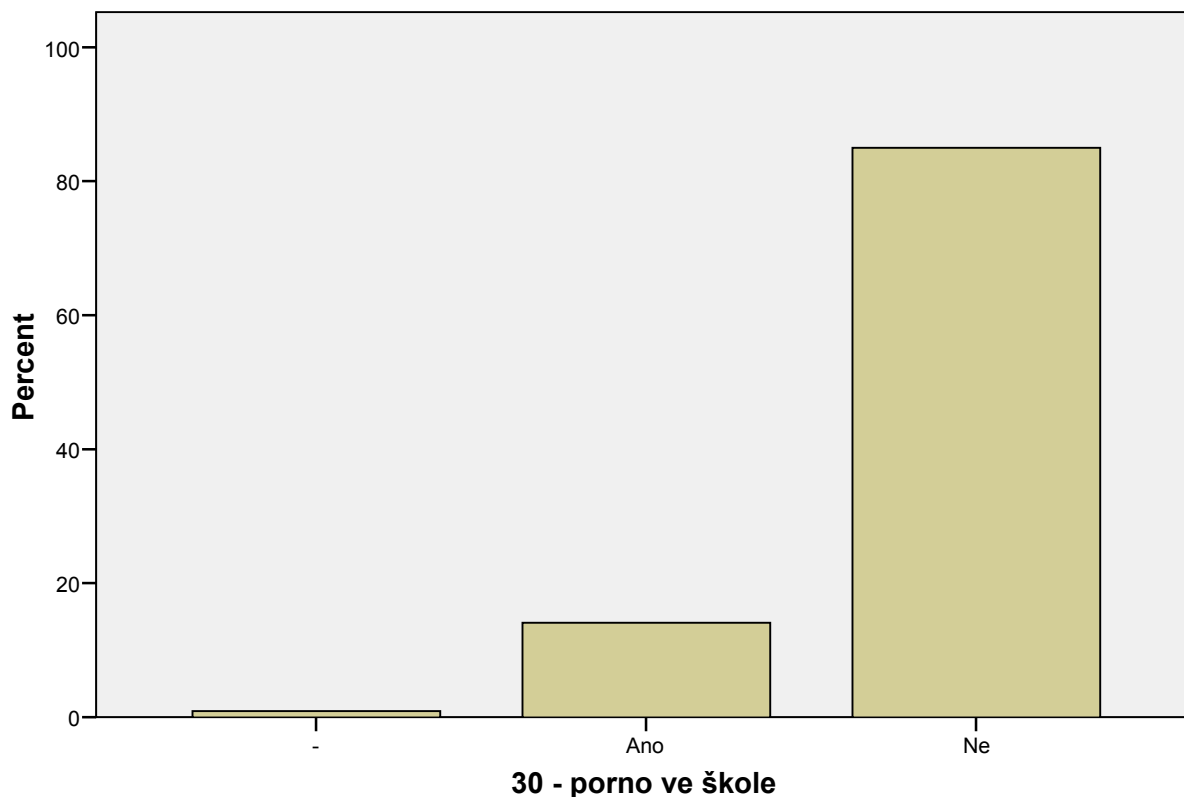
30 - porno ve škole

N	Valid	220
	Missing	0

30 - porno ve škole

		Frequency	Percent	Valid Percent	Cumulative Percent
Valid	-	2	,9	,9	,9
	Ano	31	14,1	14,1	15,0
	Ne	187	85,0	85,0	100,0
	Total	220	100,0	100,0	

30 - porno ve škole



FREQUENCIES

```
VARIABLES=@31Análnísex @31Domácífoceníotáčení @31Homosexuálnístyk  
@31Nahráváníiporna @31Pissing @31Orálnísex @31Prácenaerotickémlivechatu  
@31Prostituce @31Sadomasobandage @31Sexsprostitutkou @31Skupinovýsex  
@31Trojka  
/STATISTICS=MEAN MEDIAN  
/BARCHART PERCENT  
/ORDER= ANALYSIS .
```

Frequencies

Notes

Output Created	19-NOV-2010 23:36:56	
Comments		
Input	Active Dataset	DataSet2
	Filter	<none>
	Weight	<none>
	Split File	<none>
	N of Rows in Working Data File	220
Missing Value Handling	Definition of Missing	User-defined missing values are treated as missing.
	Cases Used	Statistics are based on all cases with valid data.
Syntax	FREQUENCIES VARIABLES=@31Análnísex @31Domácífočenínatáèení @31Homosexuálnístyk @31Nahráváníporna @31Pissing @31Orálnísex @31Práceaerotickémlivechatu @31Prostituce @31Sadomasobandage @31Sexsprostitutkou @31Skupinovýsex @31Trojka /STATISTICS=MEAN MEDIAN /BARCHART PERCENT /ORDER= ANALYSIS .	
Resources	Elapsed Time	0:00:01,62
	Processor Time	0:00:01,69

[DataSet2]

Statistics

	31 - Anální sex	31 - Domácí fočení, natáèení	31 - Homosexuální styk	31 - Nahrávání porna	31 - Pissing	31 - Orální sex
N Valid	220	220	220	220	220	220
Missing	0	0	0	0	0	0

Statistics

	31 - Práce na erotickém live chatu	31 - Prostituce	31 - Sado maso / bandage	31 - Sex s prostitutkou	31 - Skupinový sex	31 - Trojka
N Valid	220	220	220	220	220	220
Missing	0	0	0	0	0	0

Frequency Table

31 - Anální sex

	Frequency	Percent	Valid Percent	Cumulative Percent
Valid -	6	2,7	2,7	2,7
Ěasto	2	,9	,9	3,6
Nikdy	143	65,0	65,0	68,6
Obèas	64	29,1	29,1	97,7
Velmi èasto	5	2,3	2,3	100,0
Total	220	100,0	100,0	

31 - Domácí focení, natáèení

	Frequency	Percent	Valid Percent	Cumulative Percent
Valid -	7	3,2	3,2	3,2
Ěasto	1	,5	,5	3,6
Nikdy	118	53,6	53,6	57,3
Obèas	94	42,7	42,7	100,0
Total	220	100,0	100,0	

31 - Homosexuální styk

	Frequency	Percent	Valid Percent	Cumulative Percent
Valid -	8	3,6	3,6	3,6
Ěasto	2	,9	,9	4,5
Nikdy	190	86,4	86,4	90,9
Obèas	16	7,3	7,3	98,2
Velmi èasto	4	1,8	1,8	100,0
Total	220	100,0	100,0	

31 - Nahrávání porna

	Frequency	Percent	Valid Percent	Cumulative Percent
Valid -	7	3,2	3,2	3,2
Ěasto	1	,5	,5	3,6
Nikdy	211	95,9	95,9	99,5
Obèas	1	,5	,5	100,0
Total	220	100,0	100,0	

31 - Pissing

	Frequency	Percent	Valid Percent	Cumulative Percent
Valid -	8	3,6	3,6	3,6
Ěasto	4	1,8	1,8	5,5
Nikdy	201	91,4	91,4	96,8
Obèas	7	3,2	3,2	100,0
Total	220	100,0	100,0	

31 - Orální sex

	Frequency	Percent	Valid Percent	Cumulative Percent
Valid -	6	2,7	2,7	2,7
Ěasto	73	33,2	33,2	35,9
Nikdy	19	8,6	8,6	44,5
Oběs	32	14,5	14,5	59,1
Velmi ěasto	90	40,9	40,9	100,0
Total	220	100,0	100,0	

31 - Práce na erotickém live chatu

	Frequency	Percent	Valid Percent	Cumulative Percent
Valid -	7	3,2	3,2	3,2
Nikdy	209	95,0	95,0	98,2
Oběs	4	1,8	1,8	100,0
Total	220	100,0	100,0	

31 - Prostituce

	Frequency	Percent	Valid Percent	Cumulative Percent
Valid -	10	4,5	4,5	4,5
Nikdy	210	95,5	95,5	100,0
Total	220	100,0	100,0	

31 - Sado maso / bandage

	Frequency	Percent	Valid Percent	Cumulative Percent
Valid -	8	3,6	3,6	3,6
Ěasto	6	2,7	2,7	6,4
Nikdy	181	82,3	82,3	88,6
Oběs	23	10,5	10,5	99,1
Velmi ěasto	2	,9	,9	100,0
Total	220	100,0	100,0	

31 - Sex s prostitutkou

	Frequency	Percent	Valid Percent	Cumulative Percent
Valid -	6	2,7	2,7	2,7
Nikdy	212	96,4	96,4	99,1
Oběs	2	,9	,9	100,0
Total	220	100,0	100,0	

31 - Skupinový sex

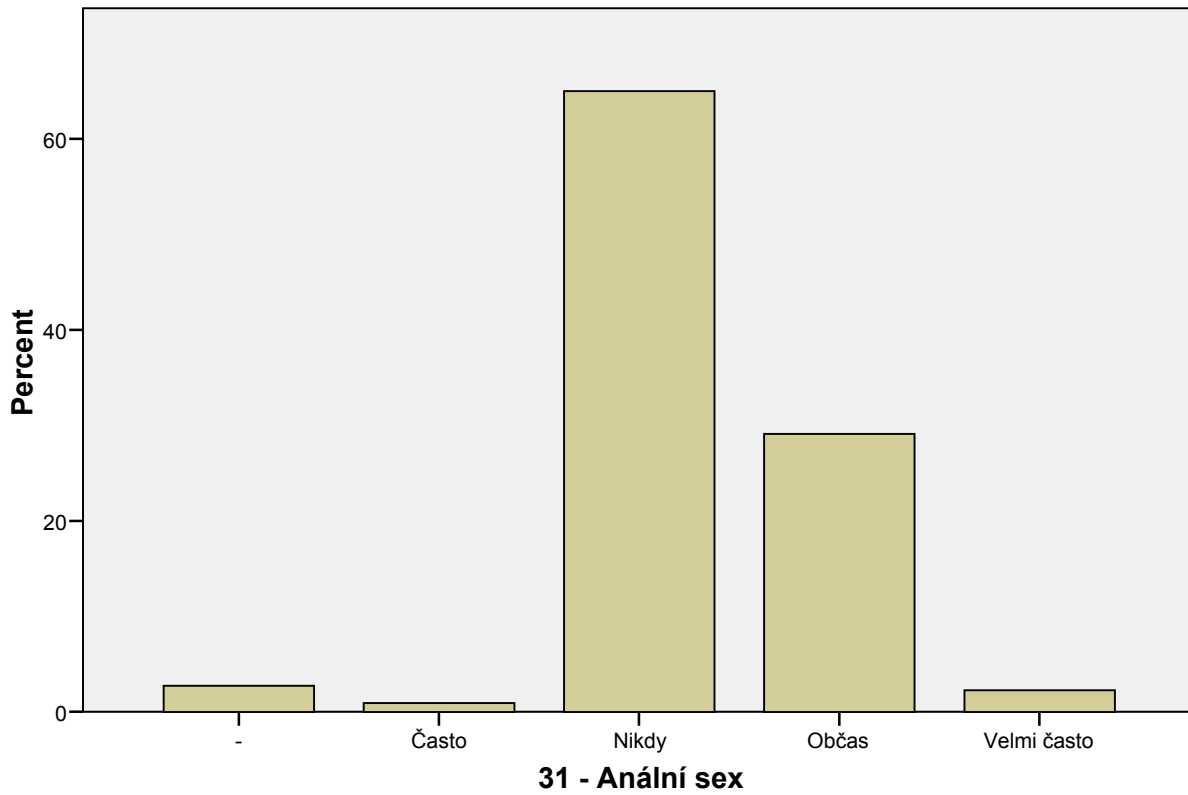
	Frequency	Percent	Valid Percent	Cumulative Percent
Valid -	8	3,6	3,6	3,6
Nikdy	206	93,6	93,6	97,3
Oběs	6	2,7	2,7	100,0
Total	220	100,0	100,0	

31 - Trojka

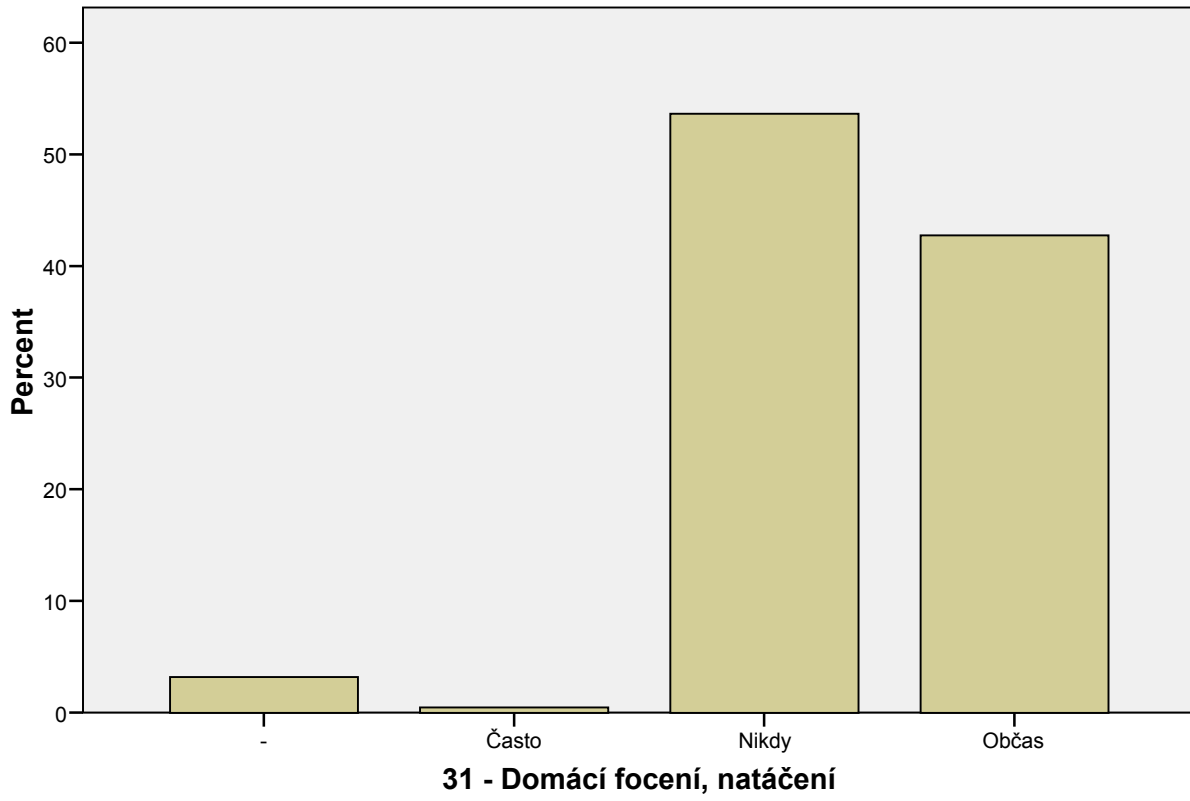
	Frequency	Percent	Valid Percent	Cumulative Percent
Valid -	10	4,5	4,5	4,5
Nikdy	190	86,4	86,4	90,9
Občas	20	9,1	9,1	100,0
Total	220	100,0	100,0	

Bar Chart

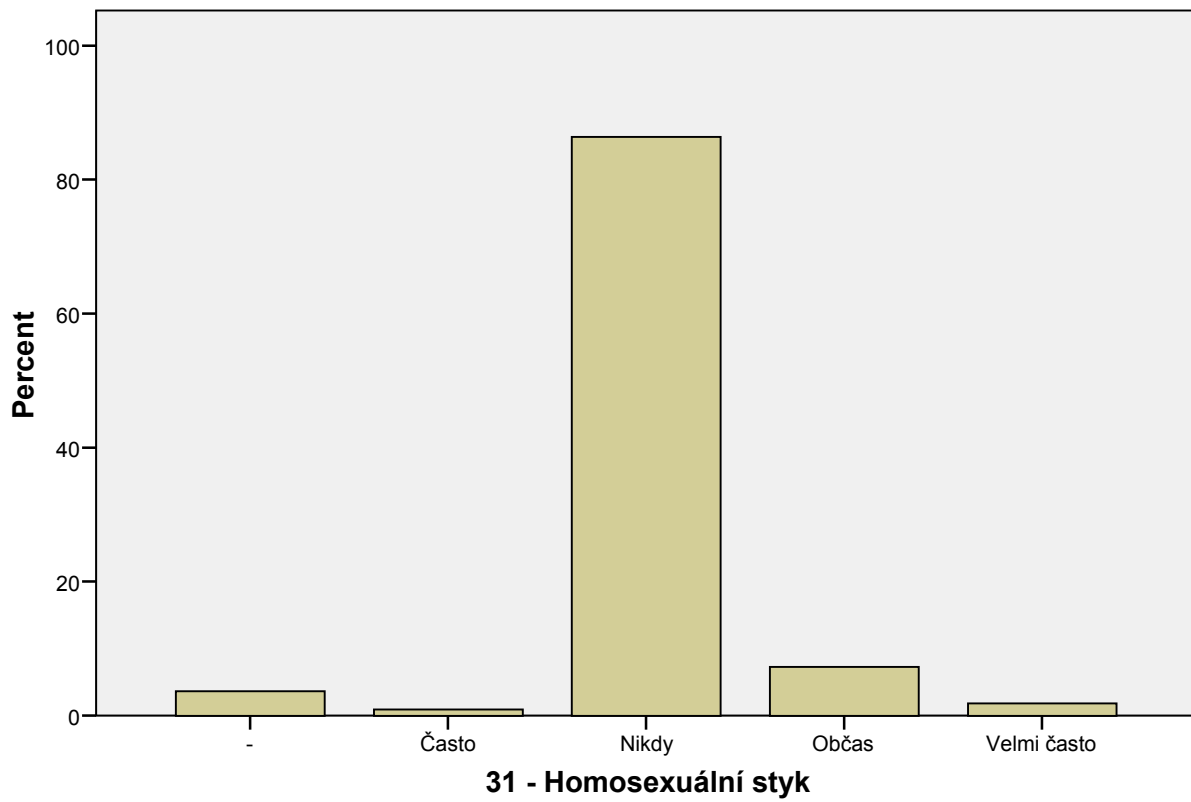
31 - Anální sex



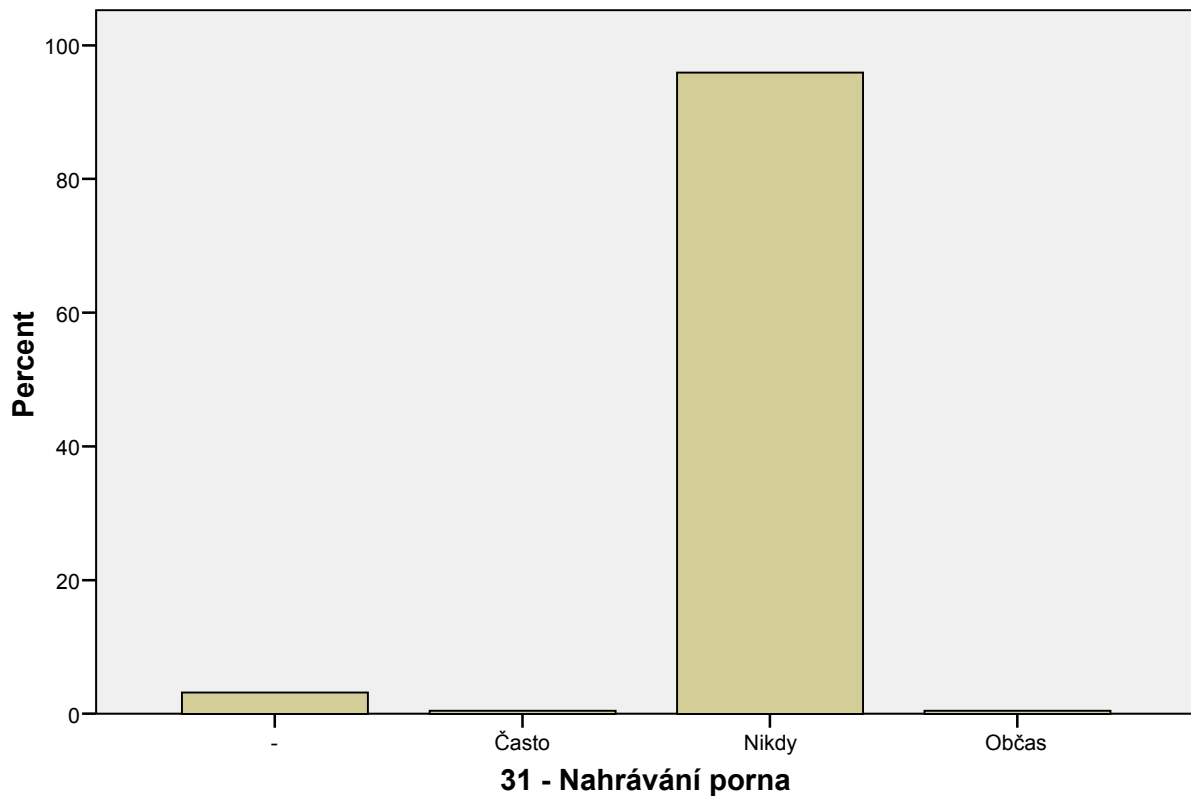
31 - Domácí focení, natáčení



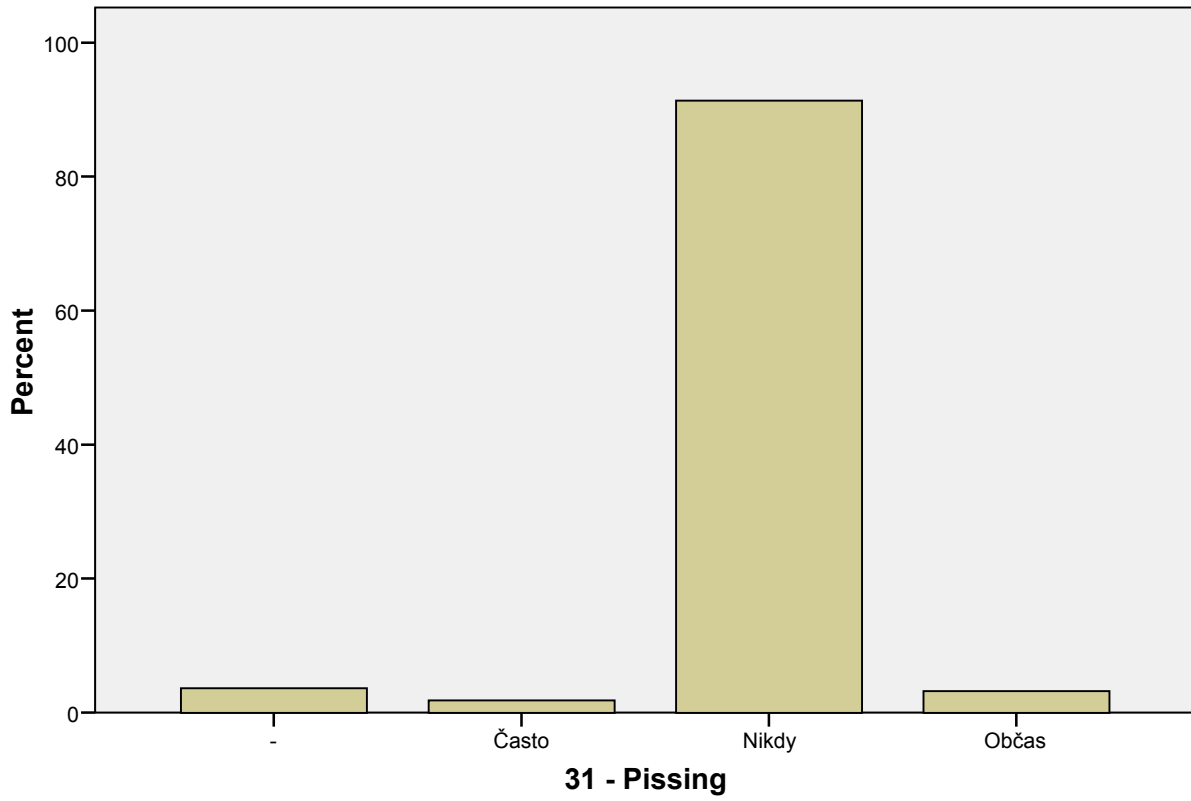
31 - Homosexuální styk



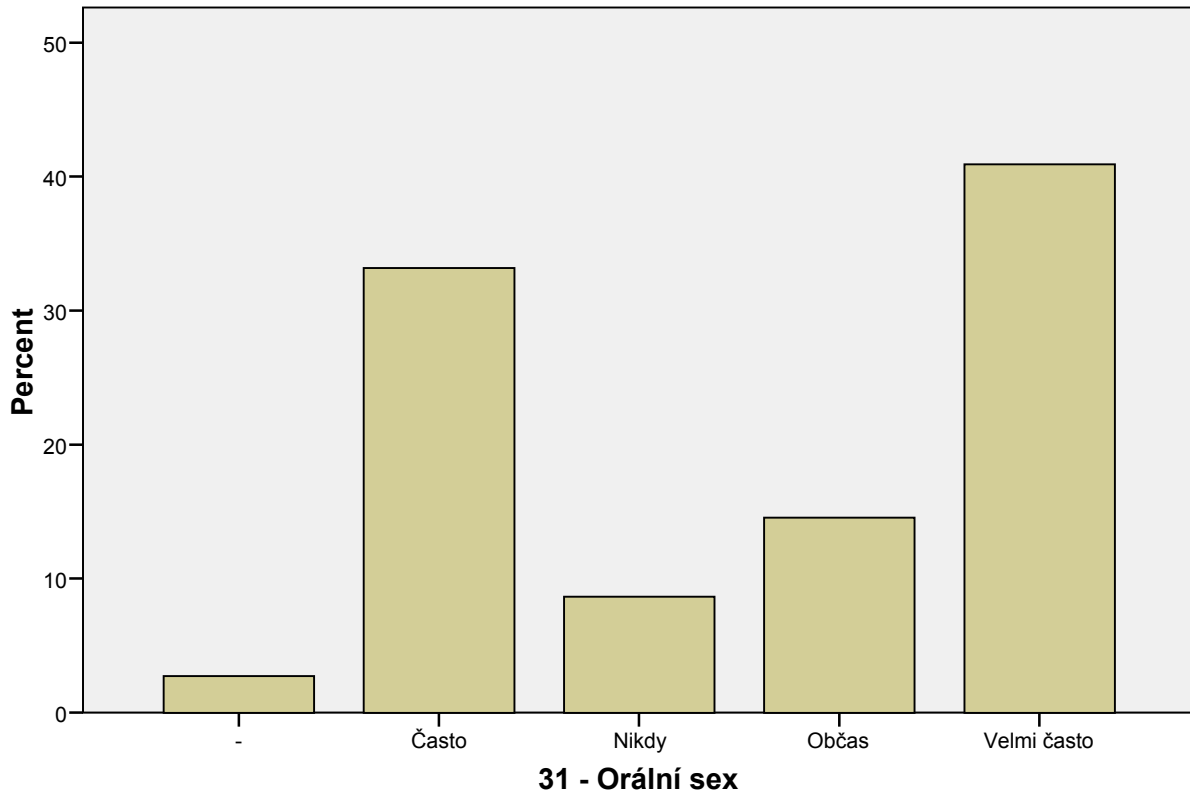
31 - Nahrávání porna



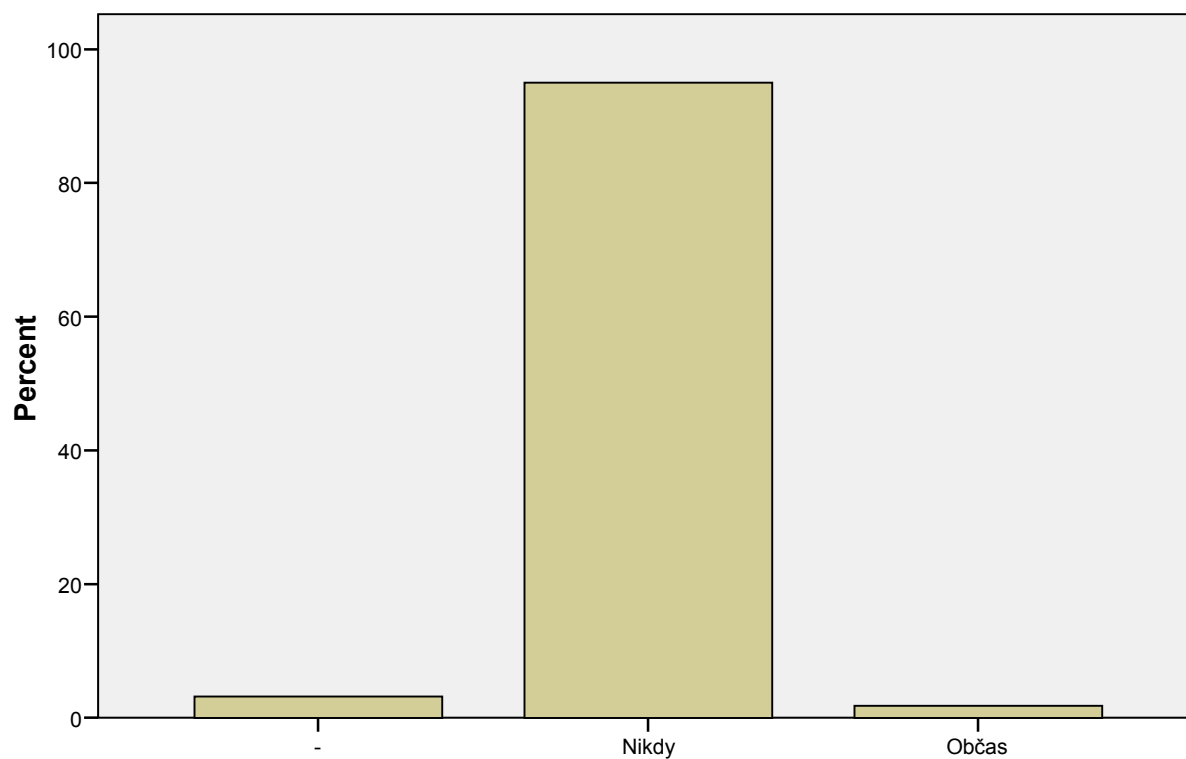
31 - Pissing



31 - Orální sex

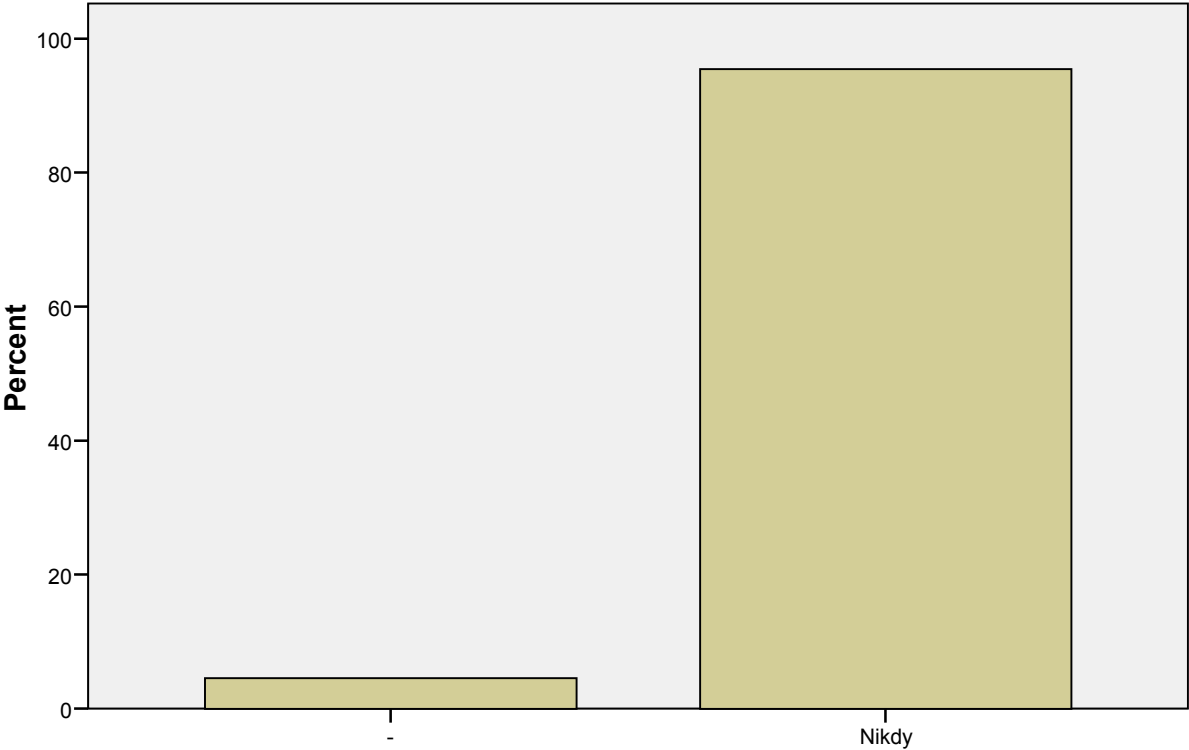


31 - Práce na erotickém live chatu



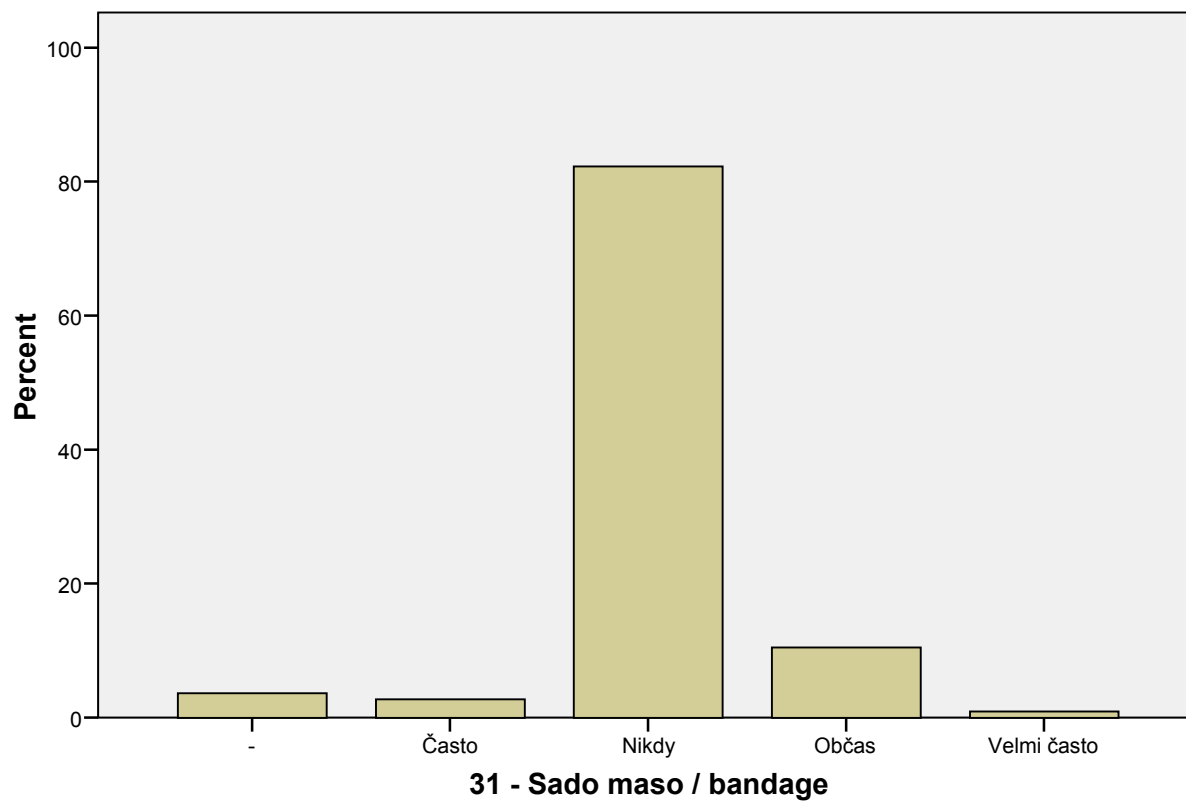
31 - Práce na erotickém live chatu

31 - Prostituce

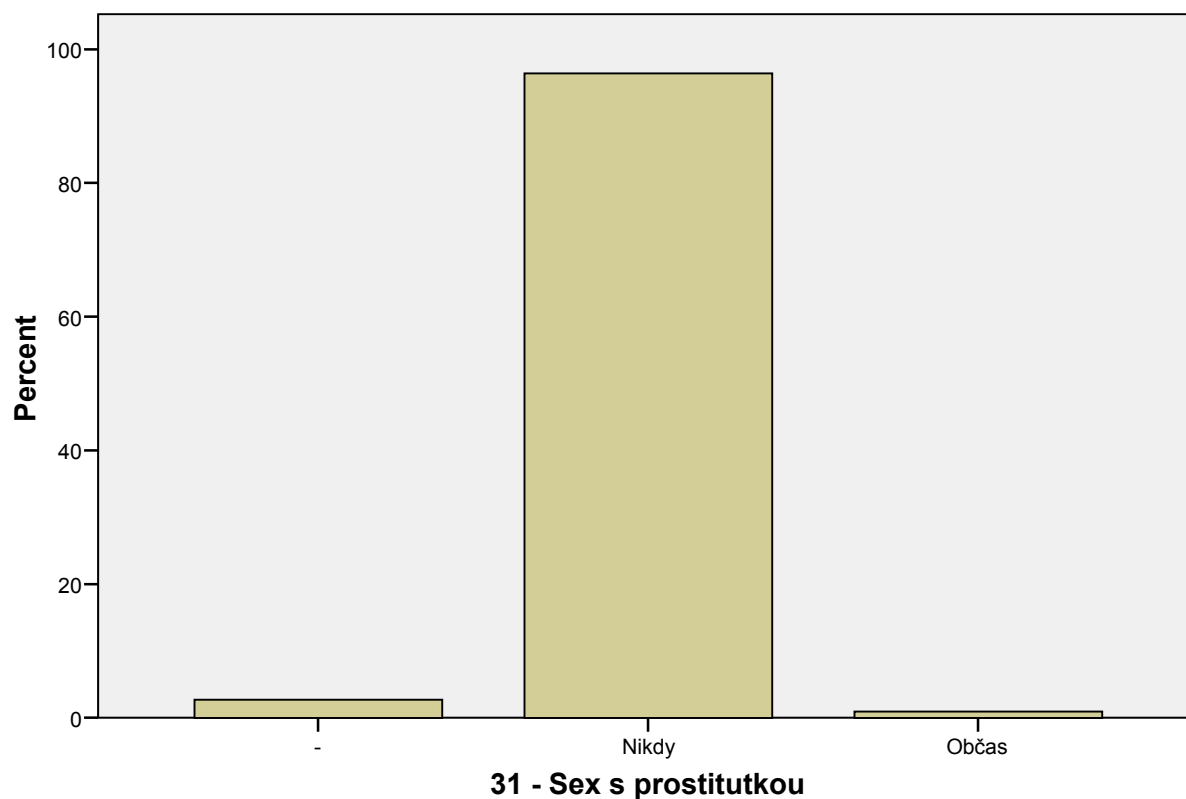


31 - Prostituce

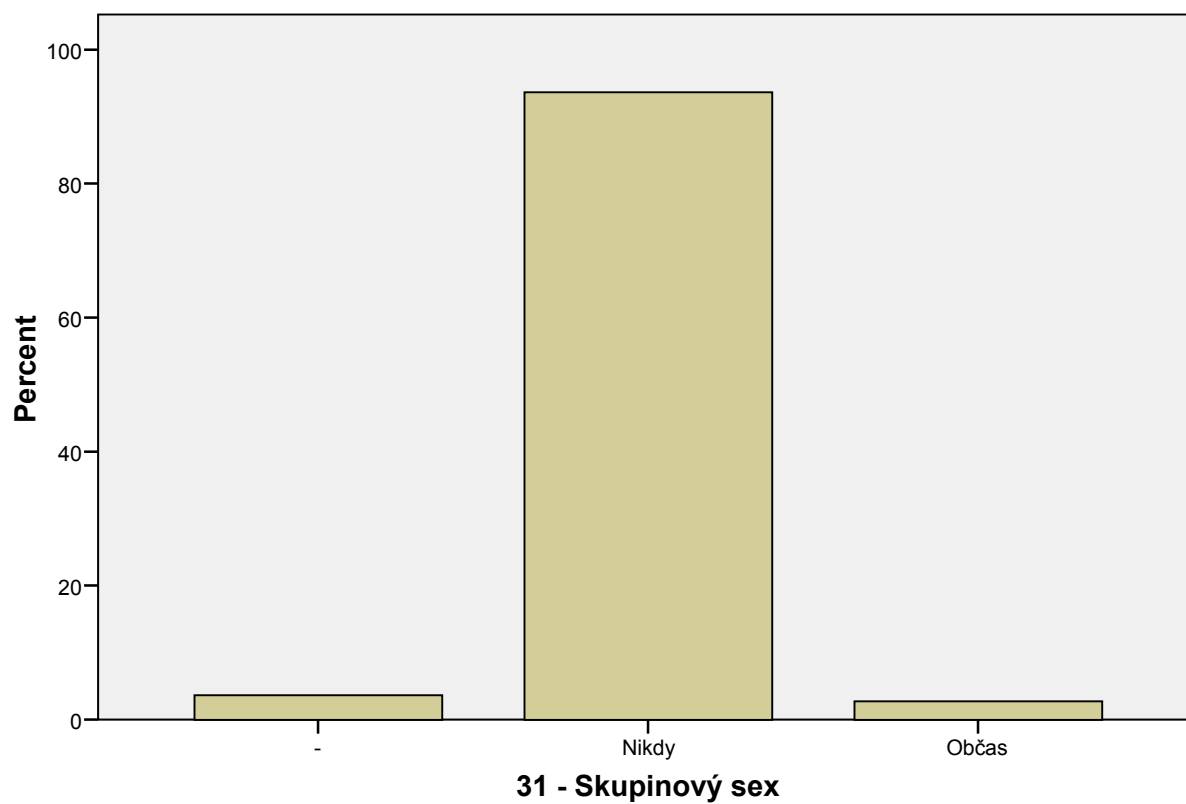
31 - Sado maso / bandage



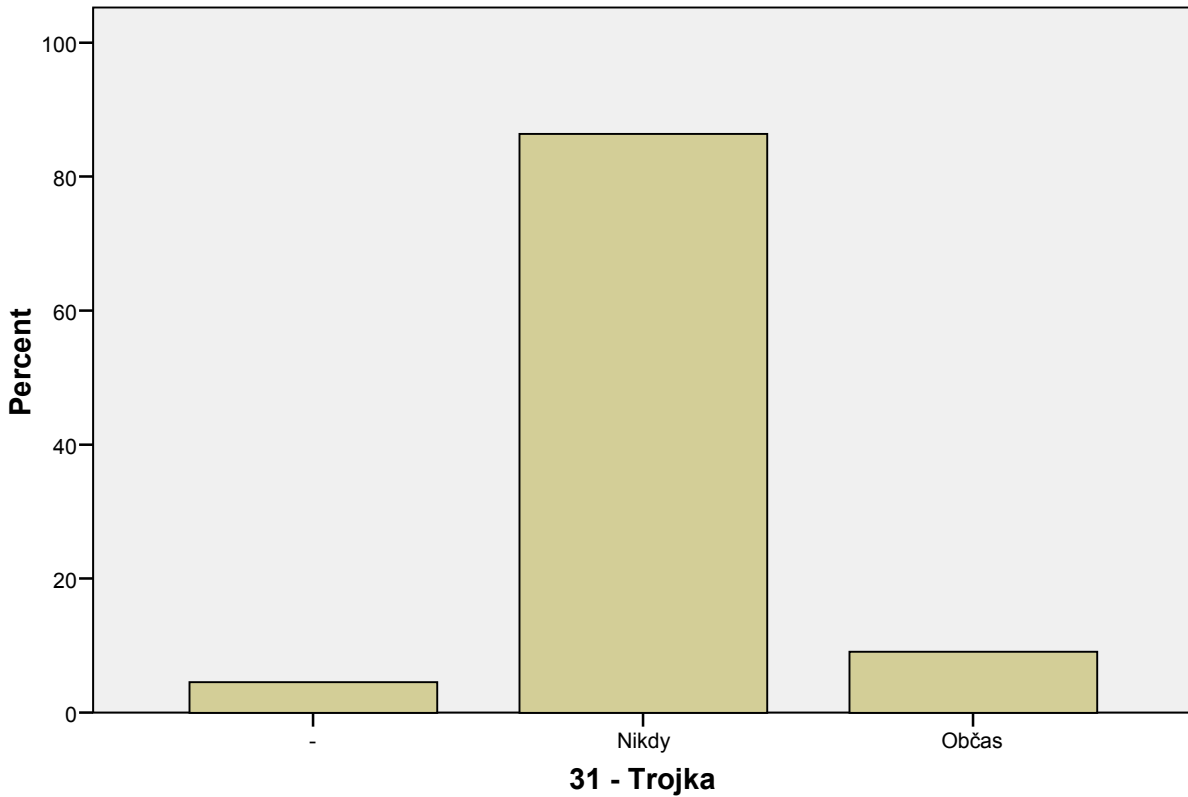
31 - Sex s prostitutkou



31 - Skupinový sex



31 - Trojka



```
FREQUENCIES
VARIABLES=@32Pohlaví
/STATISTICS=MEAN MEDIAN
/BARCHART PERCENT
/ORDER= ANALYSIS .
```

Frequencies

Notes

Output Created	19-NOV-2010 23:38:11	
Comments		
Input	Active Dataset	DataSet2
	Filter	<none>
	Weight	<none>
	Split File	<none>
	N of Rows in Working Data File	220
Missing Value Handling	Definition of Missing	User-defined missing values are treated as missing.
	Cases Used	Statistics are based on all cases with valid data.
Syntax	FREQUENCIES VARIABLES=@32Pohlaví /STATISTICS=MEAN MEDIAN /BARCHART PERCENT /ORDER= ANALYSIS .	
Resources	Elapsed Time	0:00:00,14
	Processor Time	0:00:00,19

[DataSet2]

Statistics

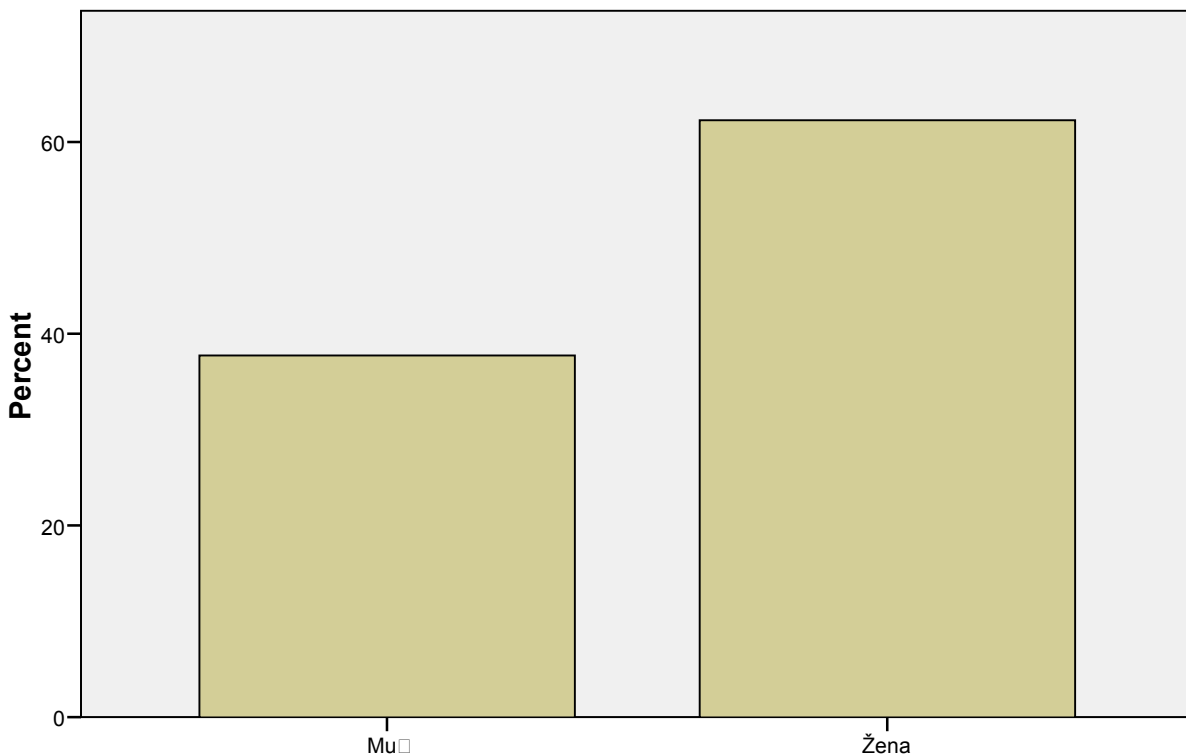
32 - Pohlaví:

N	Valid	220
	Missing	0

32 - Pohlaví:

		Frequency	Percent	Valid Percent	Cumulative Percent
Valid	Mu	83	37,7	37,7	37,7
	Žena	137	62,3	62,3	100,0
	Total	220	100,0	100,0	

32 - Pohlaví:



32 - Pohlaví:

```
FREQUENCIES  
VARIABLES=@34Primárníobor  
/STATISTICS=MEAN MEDIAN  
/BARCHART PERCENT  
/ORDER= ANALYSIS .
```

```
FREQUENCIES  
VARIABLES=@35SR  
/STATISTICS=MEAN MEDIAN  
/BARCHART PERCENT  
/ORDER= ANALYSIS .
```

Frequencies

Notes

Output Created	19-NOV-2010 23:39:58	
Comments		
Input	Active Dataset	DataSet2
	Filter	<none>
	Weight	<none>
	Split File	<none>
	N of Rows in Working Data File	220
Missing Value Handling	Definition of Missing	User-defined missing values are treated as missing.
	Cases Used	Statistics are based on all cases with valid data.
Syntax	FREQUENCIES VARIABLES=@35SR /STATISTICS=MEAN MEDIAN /BARCHART PERCENT /ORDER= ANALYSIS .	
Resources	Elapsed Time	0:00:00,14
	Processor Time	0:00:00,16

[DataSet2]

Statistics

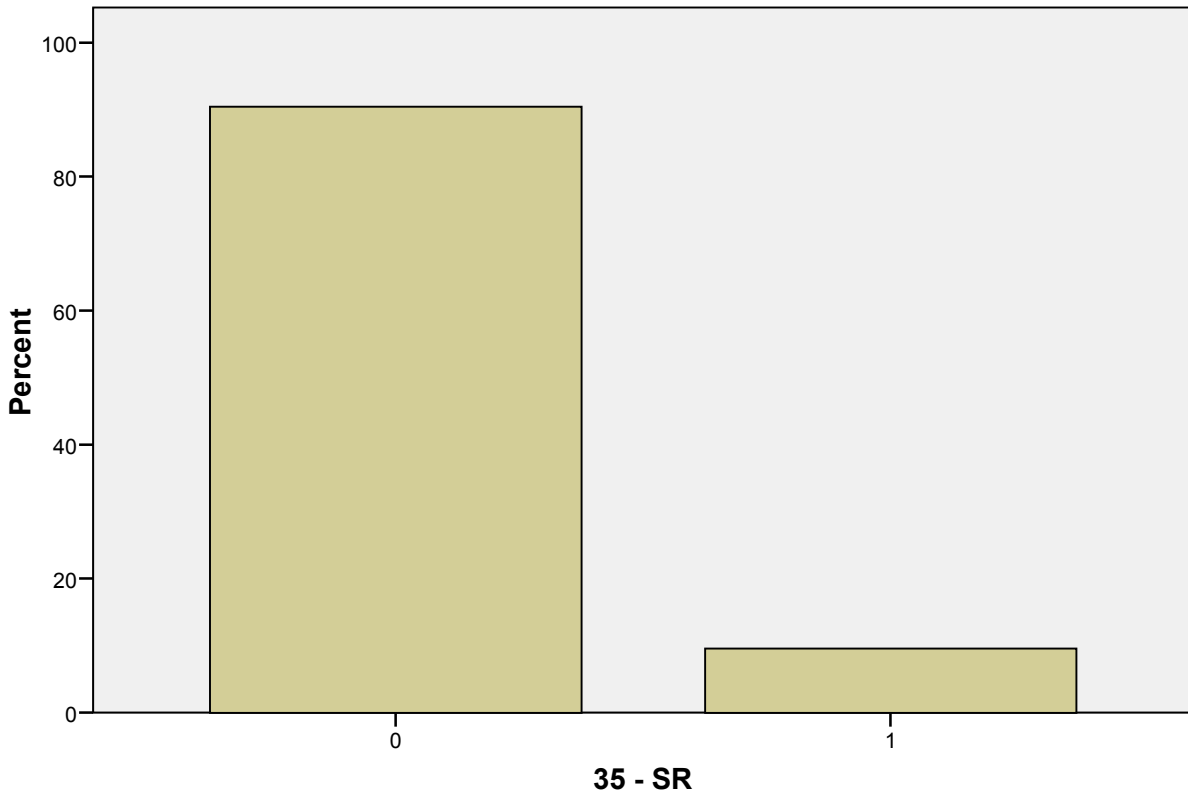
35 - SR

N	Valid	220
	Missing	0
Mean		,10
Median		,00

35 - SR

	Frequency	Percent	Valid Percent	Cumulative Percent
Valid 0	199	90,5	90,5	90,5
1	21	9,5	9,5	100,0
Total	220	100,0	100,0	

35 - SR



```

FREQUENCIES
VARIABLES=@36Bydlo
/STATISTICS=MEAN MEDIAN
/BARCHART PERCENT
/ORDER= ANALYSIS .
    
```

Frequencies

Notes

Output Created	19-NOV-2010 23:40:38	
Comments		
Input	Active Dataset	DataSet2
	Filter	<none>
	Weight	<none>
	Split File	<none>
	N of Rows in Working Data File	220
Missing Value Handling	Definition of Missing	User-defined missing values are treated as missing.
	Cases Used	Statistics are based on all cases with valid data.
Syntax	FREQUENCIES VARIABLES=@36Bydlo /STATISTICS=MEAN MEDIAN /BARCHART PERCENT /ORDER= ANALYSIS .	
Resources	Elapsed Time	0:00:00,16
	Processor Time	0:00:00,22

Statistics

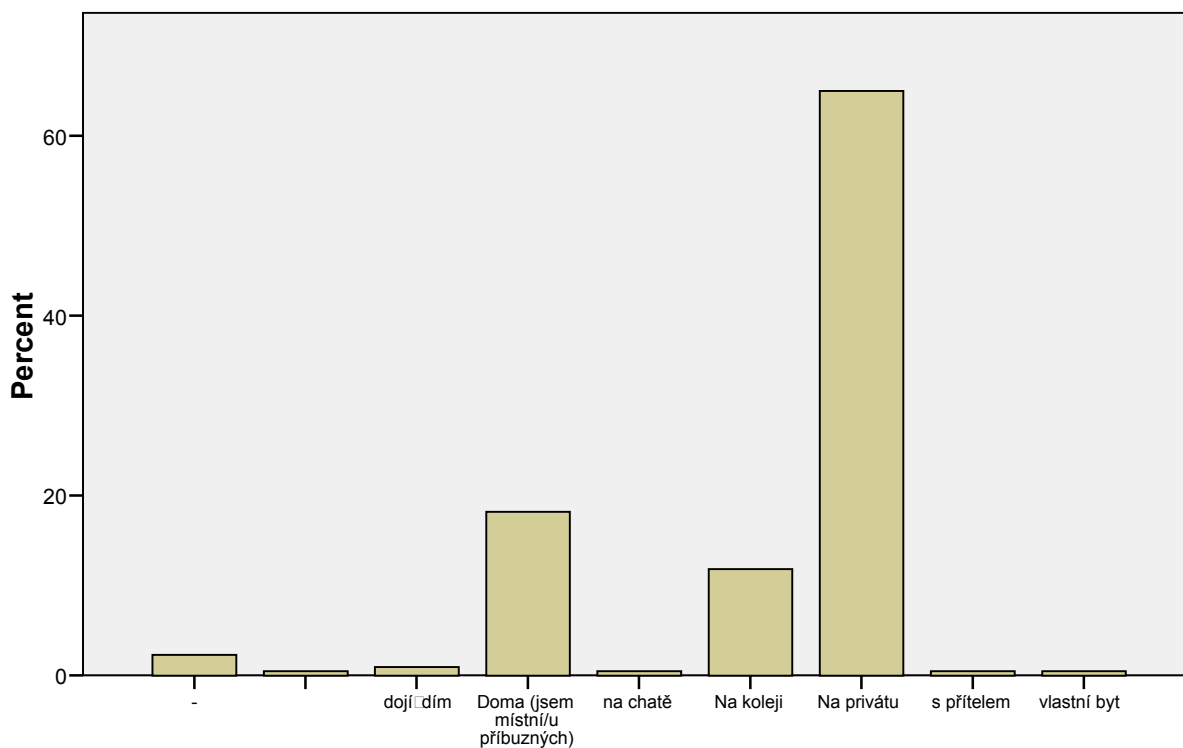
36 - Bydlo

N	Valid	220
	Missing	0

36 - Bydlo

	Frequency	Percent	Valid Percent	Cumulative Percent
Valid -	5	2,3	2,3	2,3
	1	,5	,5	2,7
dojířdím	2	,9	,9	3,6
Doma (jsem místní/u příbuzných)	40	18,2	18,2	21,8
na chatě	1	,5	,5	22,3
Na koleji	26	11,8	11,8	34,1
Na privátu s přítelem	143	65,0	65,0	99,1
vlastní byt	1	,5	,5	100,0
Total	220	100,0	100,0	

36 - Bydlo



36 - Bydlo

```
FREQUENCIES
VARIABLES=@37Rodinný stav
/STATISTICS=MEAN MEDIAN
/BARCHART PERCENT
```

Frequencies

Notes

Output Created	19-NOV-2010 23:40:51	
Comments		
Input	Active Dataset	DataSet2
	Filter	<none>
	Weight	<none>
	Split File	<none>
	N of Rows in Working Data File	220
Missing Value Handling	Definition of Missing	User-defined missing values are treated as missing.
	Cases Used	Statistics are based on all cases with valid data.
Syntax	FREQUENCIES VARIABLES=@37Rodinný stav /STATISTICS=MEAN MEDIAN /BARCHART PERCENT /ORDER= ANALYSIS .	
Resources	Elapsed Time	0:00:00,14
	Processor Time	0:00:00,16

[DataSet2]

Statistics

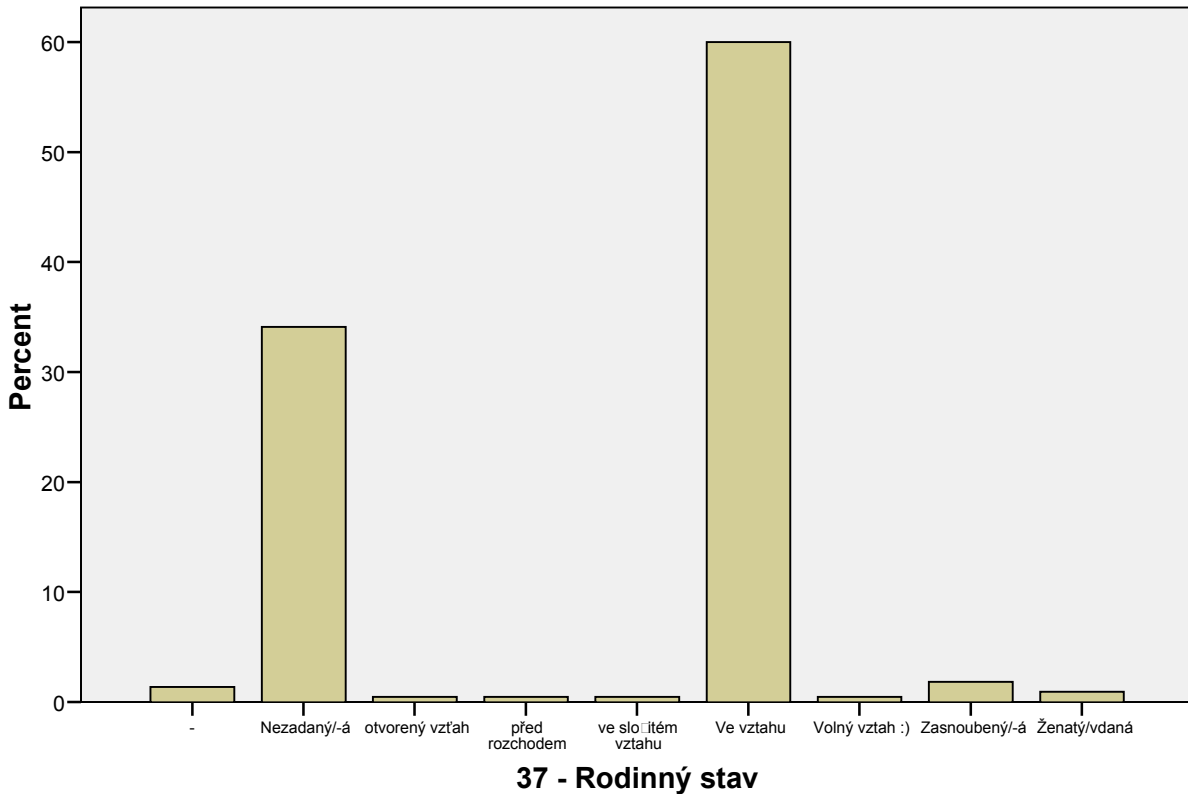
37 - Rodinný stav

N	Valid	220
	Missing	0

37 - Rodinný stav

	Frequency	Percent	Valid Percent	Cumulative Percent
Valid -	3	1,4	1,4	1,4
Nezadaný/-á	75	34,1	34,1	35,5
otvorený vz aň	1	,5	,5	35,9
pøed rozchodem	1	,5	,5	36,4
ve složitém vztahu	1	,5	,5	36,8
Ve vztahu	132	60,0	60,0	96,8
Volný vztah :)	1	,5	,5	97,3
Zasnoubený/-á	4	1,8	1,8	99,1
Ženatý/vdaná	2	,9	,9	100,0
Total	220	100,0	100,0	

37 - Rodinný stav



```
FREQUENCIES
VARIABLES=@38Náboženství
/STATISTICS=MEAN MEDIAN
/BARCHART PERCENT
/ORDER= ANALYSIS .
```

Frequencies

Notes

Output Created	19-NOV-2010 23:41:12	
Comments		
Input	Active Dataset	DataSet2
	Filter	<none>
	Weight	<none>
	Split File	<none>
	N of Rows in Working Data File	220
Missing Value Handling	Definition of Missing	User-defined missing values are treated as missing.
	Cases Used	Statistics are based on all cases with valid data.
Syntax	<pre>FREQUENCIES VARIABLES=@38Náboženství /STATISTICS=MEAN MEDIAN /BARCHART PERCENT /ORDER= ANALYSIS .</pre>	
Resources	Elapsed Time	0:00:00,14
	Processor Time	0:00:00,19

Statistics

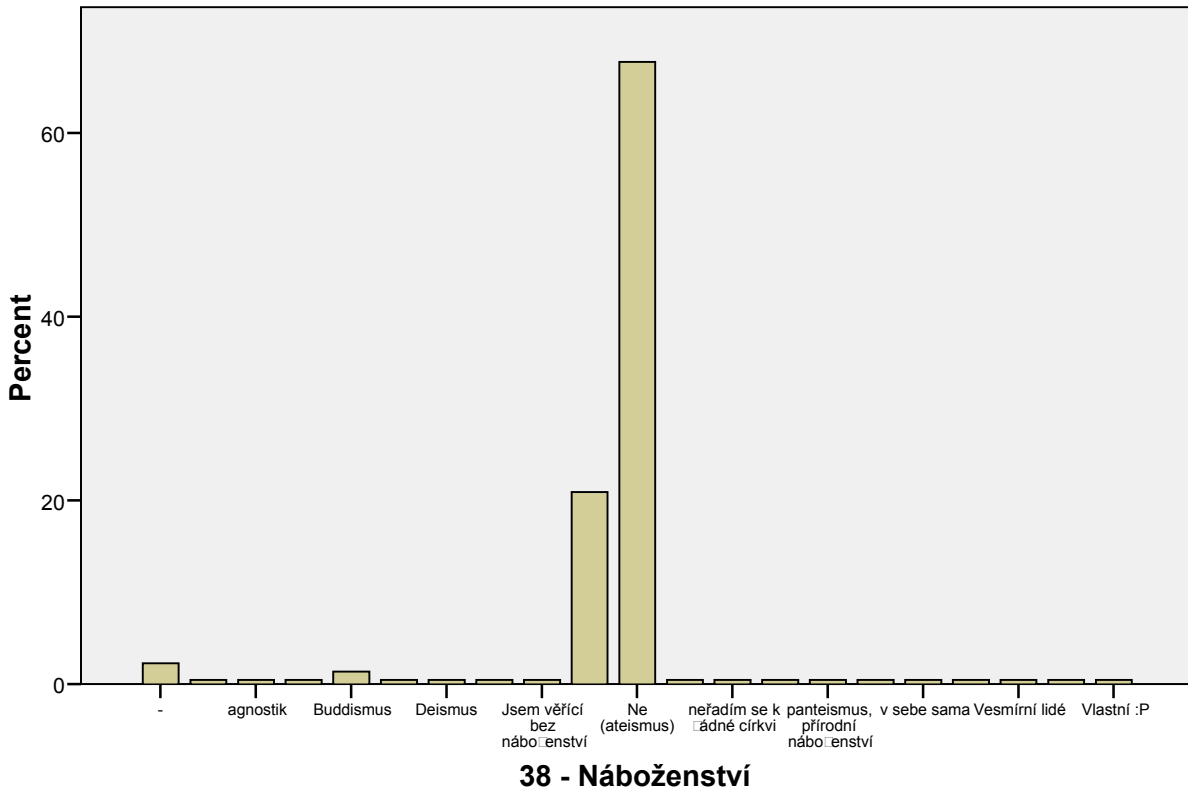
38 - Náboženství

N	Valid	220
	Missing	0

38 - Náboženství

	Frequency	Percent	Valid Percent	Cumulative Percent
Valid -	5	2,3	2,3	2,3
	1	,5	,5	2,7
agnostik	1	,5	,5	3,2
agnostik (prostě nevím)	1	,5	,5	3,6
Buddismus	3	1,4	1,4	5,0
Bůh - ano, církev - ne.	1	,5	,5	5,5
Deismus	1	,5	,5	5,9
individuální křesťanství	1	,5	,5	6,4
Jsem vířící bez náboženství	1	,5	,5	6,8
Křesťanství	46	20,9	20,9	27,7
Ne (ateismus)	149	67,7	67,7	95,5
nejsem ateista, vířím v duchovno	1	,5	,5	95,9
neřadím se k žádné církvi	1	,5	,5	96,4
new age	1	,5	,5	96,8
panteismus, přírodní náboženství	1	,5	,5	97,3
svoje	1	,5	,5	97,7
v sebe sama	1	,5	,5	98,2
vířící bez vyznání	1	,5	,5	98,6
Vesmírní lidé	1	,5	,5	99,1
vlastní	1	,5	,5	99,5
Vlastní :P	1	,5	,5	100,0
Total	220	100,0	100,0	

38 - Náboženství



FREQUENCIES

```
VARIABLES=@39Vzrušil tědotazník
/STATISTICS=MEAN MEDIAN
/BARCHART PERCENT
/ORDER= ANALYSIS .
```

Frequencies

Notes

Output Created	19-NOV-2010 23:42:53	
Comments		
Input	Active Dataset	DataSet2
	Filter	<none>
	Weight	<none>
	Split File	<none>
	N of Rows in Working Data File	220
Missing Value Handling	Definition of Missing	User-defined missing values are treated as missing.
	Cases Used	Statistics are based on all cases with valid data.
Syntax	FREQUENCIES VARIABLES=@39Vzrušil tidotazník /STATISTICS=MEAN MEDIAN /BARCHART PERCENT /ORDER= ANALYSIS .	
Resources	Elapsed Time	0:00:00,14
	Processor Time	0:00:00,17

Statistics

39 - Vzrušil ti dotazník

N	Valid	220
	Missing	0

39 - Vzrušil ti dotazník

	Frequency	Percent	Valid Percent	Cumulative Percent
Valid -	1	,5	,5	,5
Ano	32	14,5	14,5	15,0
Ne	187	85,0	85,0	100,0
Total	220	100,0	100,0	

39 - Vzrušil tě dotazník

